

June 8, 2016

Steve Kessler, Superintendent
Beverly Hills Unified School District
255 South Lasky Drive
Beverly Hills, California 90212

3130 Wilshire Boulevard
6th Floor
Santa Monica, CA 90403

o: 310/828-0040
f: 310/453-9432

Project Name: Beverly Hills High School Modernization
DLR Group Project No.: 75-12202-00

Re: Proposal for Addition of Temporary Open-Mesh Perimeter Fencing at Moreno Drive

Dear Mr. Kessler:

DLR Group has been asked by Totum Consulting submit this proposal to study and provide designs and construction documents for a temporary fence and gates along Moreno Drive and near the campus entry at Heath Avenue. Our understanding of the scope is based on a June 2nd telephone discussion with John Serdar of Totum Consulting, and on prior discussion of the future, permanent perimeter fence.

It is our understanding that the documents are to be developed on an accelerated schedule, and that bidding will be concurrent with DSA review. Any revisions made during the DSA review process are to be issued to the project as field directives, and may result in change orders to the construction contract.

The fence and gates are to be eight feet high, with open-mesh fabric. Fencing will be designed to have mesh fabric signage mounted to it at intervals.

1.0 Scope

1.1 Construction Documents

- 1.1.1 Develop specific fence and gate locations, gate types and hardware requirements.
- 1.1.2 Attend one Stakeholder meeting to discuss the design.
- 1.1.3 Develop construction documents.
- 1.1.4 Submit the construction documents to DSA and gain approval.
- 1.1.5 Issue bidding documents (concurrent with DSA review).

1.2 Construction Administration and Closeout

- 1.2.1 In addition to normal Construction Administration, DLR Group will prepare and issue to the field any changes related to DSA Backcheck and approval.

2.0 Professional Fees

- 2.1 DLR Group shall provide the above scope of services for a fixed fee of Forty Two Thousand Six Hundred Ninety Dollars.

DLR Group Total	\$42,690	
Project Consultants	\$0	
Administrative Markup on Consultant Fees (10%)	\$0	
Total Fee	\$42,690	
Reimbursable allowance, 5%	\$2,135	

Work outside the scope of services defined above will be charged as additional services based on the most current DLR Group Hourly Rates. Refer to Exhibit A – Hourly Rates.

3.0 Reimbursable Expenses

- 3.1 Reimbursable Expenses are in addition to compensation for our professional services and include project-related expenses incurred by us and any of our consultants, if applicable. Expenses will be billed at cost plus an administrative markup of 0%.

4.0 Exclusions

- 4.1 Submissions to, or coordination with, agencies other than the Division of the State Architect and the Local Fire Authority.
- 4.2 Civil, structural, mechanical and electrical engineering.
- 4.3 Cost estimating.

5.0 Other Terms

- 5.1 Upon your notification that this proposal is acceptable, we will anticipate a District-issued contract document.

We look forward to working with you on this project. If you have any questions, please feel free to call me.

Respectfully,

DLR Group



Ben Levin
Principal
blevin@dlrgroup.com

Cc: Karen MacIntyre, Bryan Cohen, Jackie Martinez, File

Encl: Exhibit A – Hourly Rates
Exhibit B – Estimate of Hours
Exhibit C - Schedule

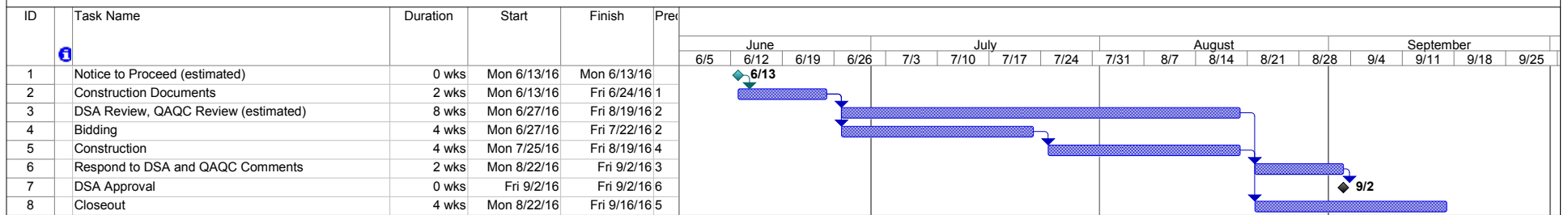
Exhibit A
DLR Group Hourly Rates

Senior Expert	\$365
Discipline Leader	\$235
Senior Professional	\$175
Professional	\$145
Professional Support	\$115
Technical	\$ 90
Clerical	\$ 70

Exhibit B
Estimate of Hours

		Total Hours	\$
Discipline Leader	\$ 235	2	\$470
Senior Professional	\$ 175	88	\$15,400
Professional	\$ 145	180	\$26,100
Technical	\$ 90	8	\$720
Total		278	\$42,690

Beverly Hills High School
Security Fencing Upgrades Project
 Additional Service Proposal for Architectural and Engineering Service



Date: Fri 6/3/16

Task		External Tasks		Manual Task		Finish-only	
Split		External Milestone		Duration-only		Progress	
Milestone		Inactive Task		Manual Summary Rollup		Deadline	
Summary		Inactive Milestone		Manual Summary			
Project Summary		Inactive Summary		Start-only			