


# **What is a Learning Management System?**

**Why is a learning management system (LMS) critical to teaching and learning?**

**Education Specification Committee Meeting**

Tuesday, February 13, 2018

Learning Management System (LMS) Team



*What is an...*

## ***Lms?***

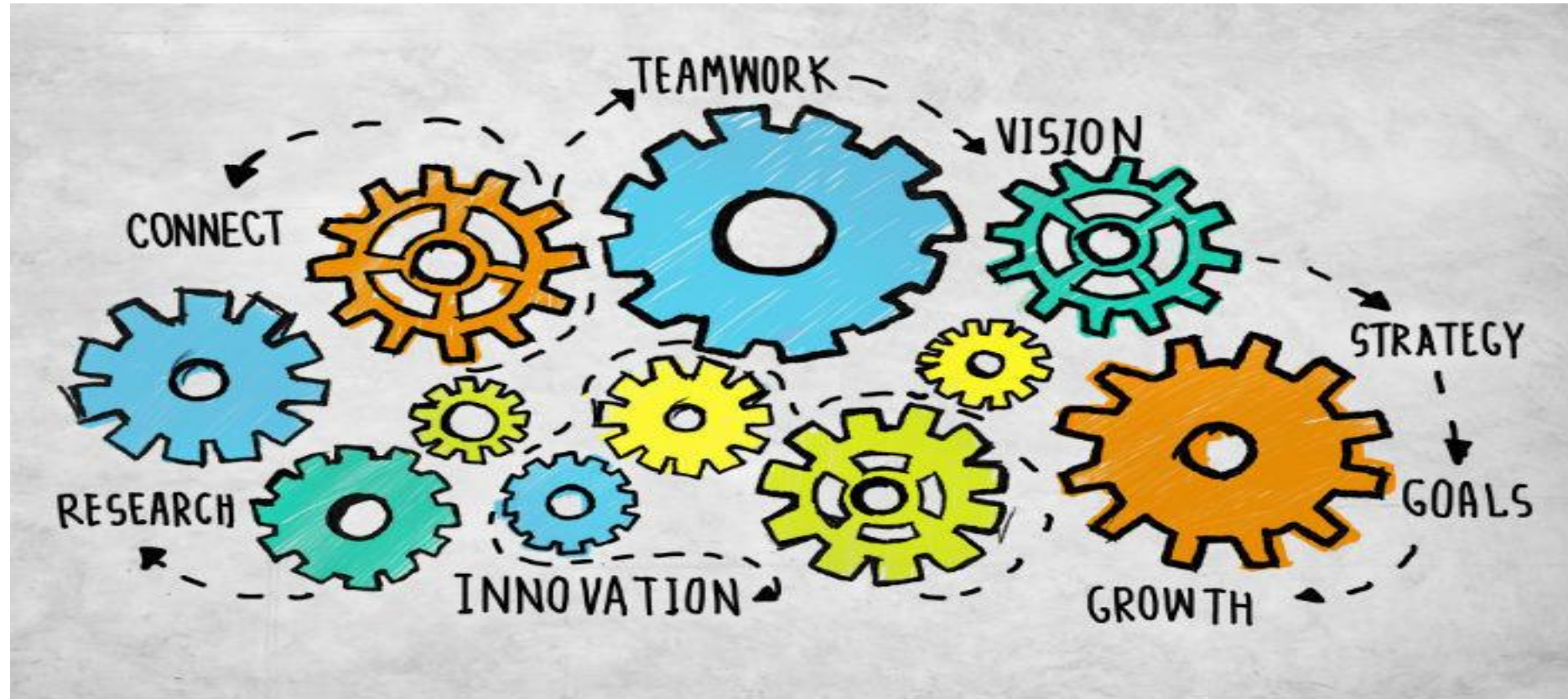
A **Learning Management System**, or **LMS**, is a web-based technology used to plan, implement, and assess learning.

## ***Why?***

### **A MORE EFFICIENT CLASSROOM**

A good **LMS** helps teachers efficiently move through the learning management process - from planning & publishing to grading & reporting.

# The Case & Vision for the LMS



# Why Introduce A LMS into the Instructional Program?

**Empower**

**Engage**

**Collaborate**

**Communicate**

**Create**

**Innovate**

**Analyze**

**Personalize**

# Why Introduce A LMS into the Instructional Program?

- Provides access to anytime, anywhere learning
- Engages students with differentiation and enrichment
- Facilitates online collaboration
- Integrates calendar and gradebook functionality
- Promotes student ownership of learning
- Solves instructional challenges effectively and creatively

# What are Lessons Learned from LMS Adoptions in Other Districts?

## What district implementations have in common:

- Voluntary adoption - not prescriptive or mandated
- Allowed for “organic” growth (adoption)
- Unanticipated high adoption rates
- All district schools invited to adopt
- Planning for or already implementing gradebook passback
- Did not hire long term FTEs dedicated to LMS implementation
- Larger districts phased in implementation, smaller districts “all in”
- Did not anticipate a need for policies on LMS course creation (standardization, sharing policies)

# **What are Lessons Learned from LMS Adoptions in Other Districts?**

## **Best practices shared:**

- Work with principals and school leadership teams as early as possible in the implementation process for most effective adoption. Differentiate PD opportunities and communications for school leadership.**
- Have administrators and school leadership teams**
- Deliver instructional support and professional development through LMS courses.**
- Create LMS groups for PLCs, curricular departments, LMS user groups and other special interests.**

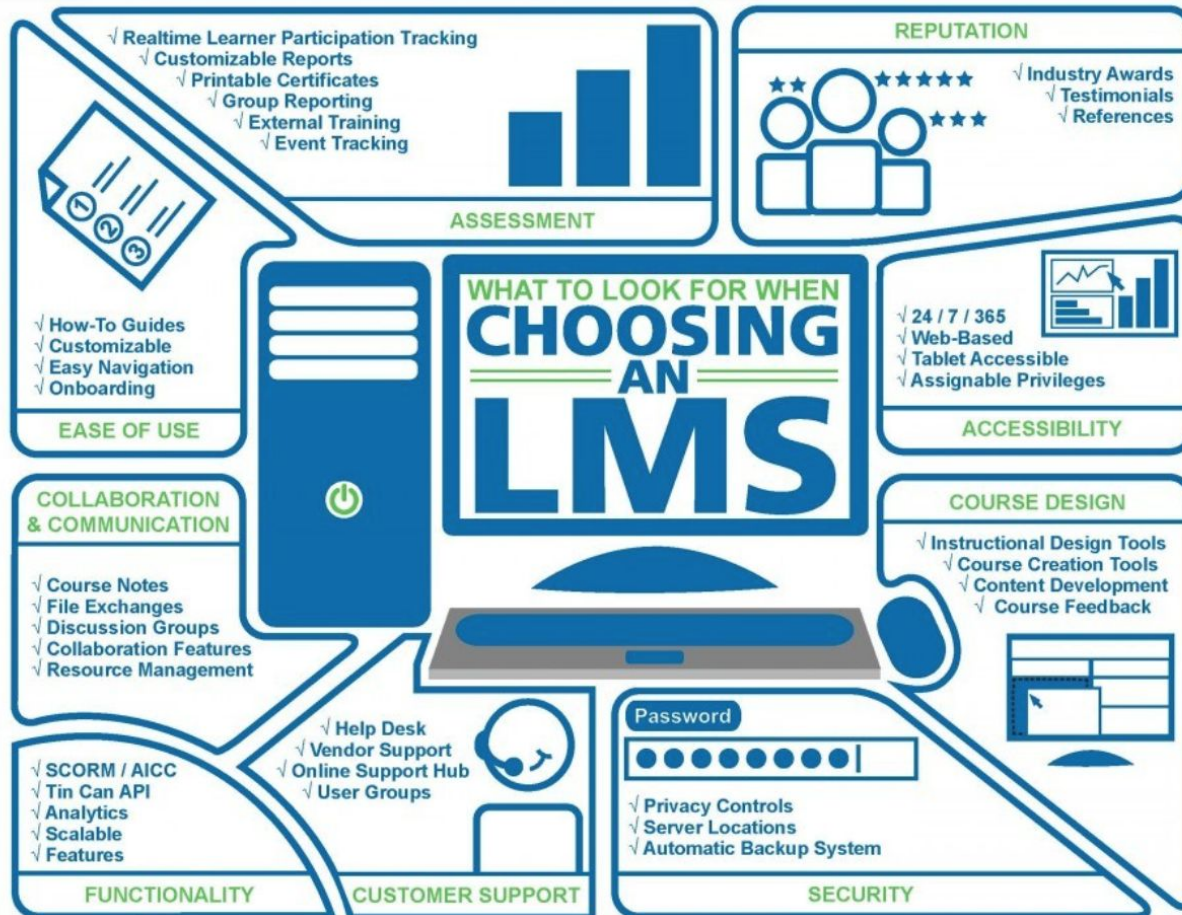
# **The District Technology Plan: LMS**

**The Learning Management selection and procurement are taken directly from the Board-approved**

Technology Plan: Reimagining Learning 2016-2019  
Reimagining Teaching & Learning



b. Implement a Learning Management System (LMS)	CAO DOT	<ul style="list-style-type: none"><li>• Student Performance Assessment Data</li><li>• BrightBytes Data</li><li>• LMS Usage Data</li><li>• Focus Group Feedback</li></ul>	
<b>Goal: All students and teachers use the LMS to (1) access digital curriculum and other learning resources (2) engage in online learning communities and (3) monitor student progress.</b>			
Objective: 100% of students and teachers use the LMS as an integral component of the instructional program in order to facilitate student proficiency and 21st Century skills mastery.			
Implementation Plan	Budget	Funding Source	Anticipated Outcomes
Select a LMS based on RFI/ RFP Process	\$75,000	General Fund	By December 2017, procure a District LMS.  By June 2018, 30% of students and teachers use the LMS as an integral component of the instructional program in order to facilitate student proficiency and 21st Century skills mastery. <b>(Pilot Phase)</b>  By June 2019, 100% of students and teachers use the LMS as an integral component of the instructional program in order to facilitate student proficiency and 21st Century skills mastery. <b>(Districtwide Implementation)</b>
Teacher Participation in selection process	\$1,800	General Fund	
Establish Pilot evaluation criteria	\$0	N/A	
Professional Development for Pilot Teachers	\$3,600	General Fund	
<b>Total</b>	\$80,400	General Fund	



Want to learn more about Learning Management Systems? Contact CypherWorx at [learnmore@cypherworx.com](mailto:learnmore@cypherworx.com)

# Learning Management System (LMS)

An LMS is a tool that allows teachers to:

- collaborate online
- create lessons and assessments
- archive and access documents, lessons, and assessment banks
- integrate calendar and gradebook functionality
- engage students in personalized learning

# **Differentiation and Enrichment**

**With an LMS, teachers provide self-paced, immediately accessible instruction designed and customized to meet student needs for academics and social learning.**



# **Student Centered Instruction**

## **A Learning Management System:**

- **Gives every student a voice**
- **Allows students to reflect and self-assess**
- **Provides immediate feedback**
- **Puts learning responsibility on the learner**
- **Easily facilitates the flipped classroom**



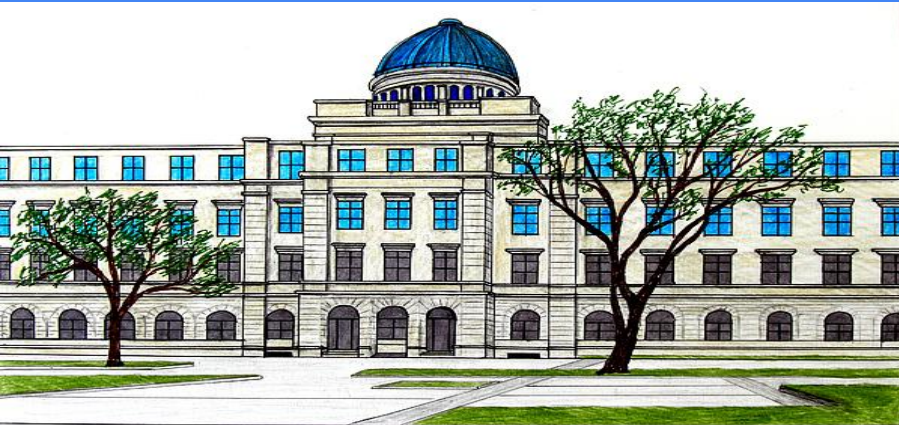
# Communication & Collaboration

Students thrive academically in an environment that facilitates communication and collaboration.



# College and Career Readiness

Colleges and universities and enterprises of all types use learning management systems for learning and instruction.



TEXAS A&M

PHOLI 06-11





# Increases Efficiency

Assignment grading and management is:

- transparent
- performed behind the scenes,
- allowing for more meaningful student-teacher interaction
- Minimizes (maybe eliminates) tedious recordkeeping.





# Assessment

- Teachers can create instruments that are differentiated for student needs.
- Surveys and quizzes provide immediate, formative feedback.

# State Assessments

An LMS provides teachers with opportunities to create student assessments similar to the Smarter Balanced Assessments (SBAC), familiarizing students with the technical aspects of assessment administration.

# Universal Access

LMS features ensure access for *all* students regardless of ability or need.



# Student Data

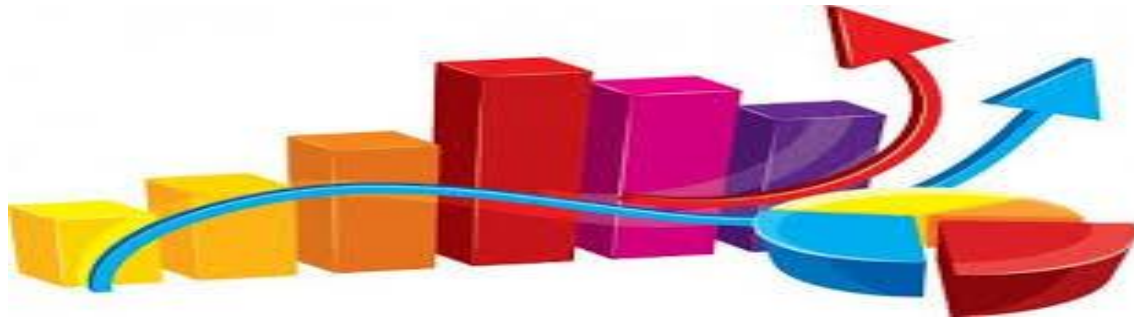
Differentiated information available by:

- School site level
- Classroom level
- Student level
- Content area



# Analytics

- An LMS provides instant access to student progress for all stakeholders.
- Students have real time access to their grades.
- Parents have instant access to their child's information.



# **Content Management**

- **An LMS includes digital content repositories with unlimited storage and content access control.**
- **Content can be tagged with multiple standards including Common Core Standards, ELA standards, and state content standards.**

# Professional Collaboration

- An LMS allows teachers to collaborate with others to share content and best practices.
- Teachers can collaborate on lessons they've created and modify lessons created by others.



# Benefits to Students

- An LMS looks and feels like familiar social media environments, and is safe and secure.
- The appealing platform makes instructional content more accessible, fun, and interesting.



# **Anywhere, Anytime Learning**

- Instructors and learners have access to learning materials at any time and from anywhere with Internet access.
- Instructional resources can be downloaded for offline access.

# Benefits to Parents

- Parents and guardians have access to student information including attendance, assignments, grades, and teacher comments.
- An LMS allows parents to communicate directly with teachers.
- All communication is logged and stored for complete accountability.

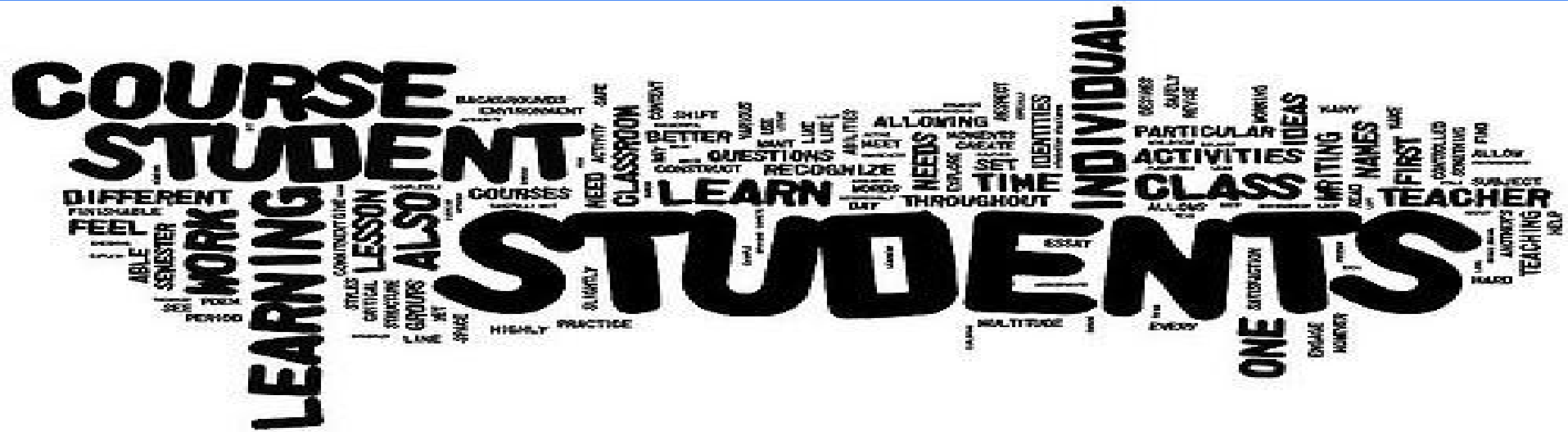


# Benefits to Teachers

- manages student workflows
- monitors progress and controls access to content
- empowers students to own their learning.

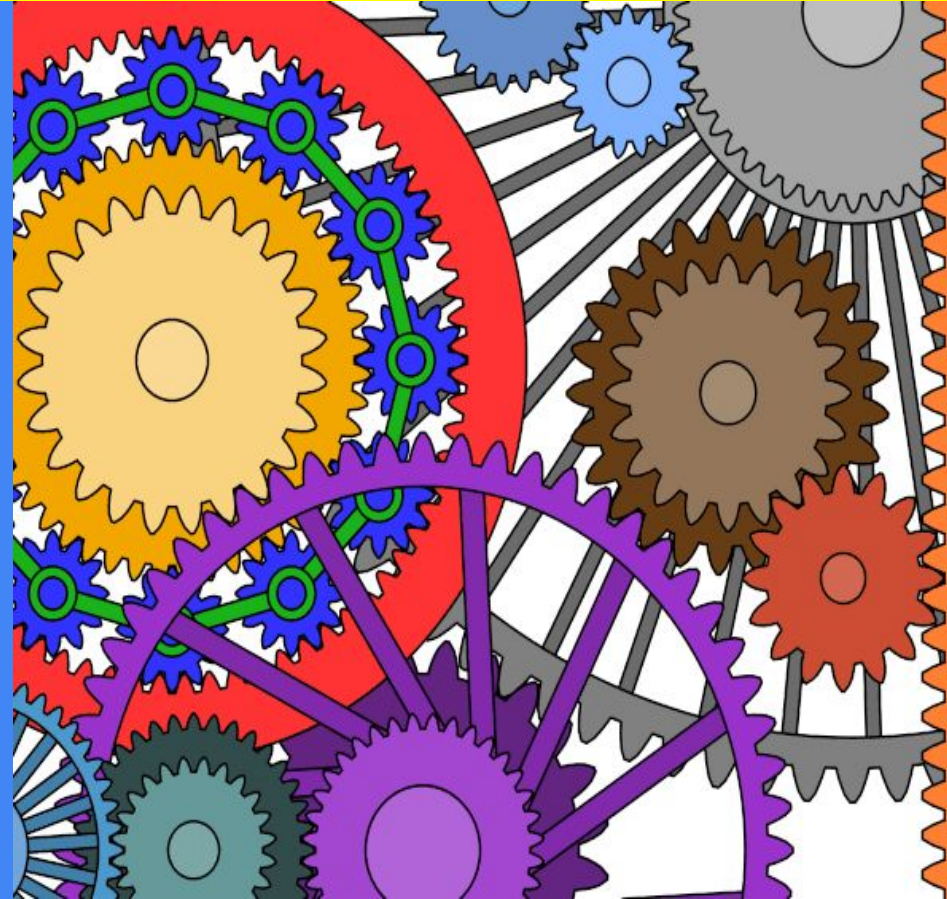
## Instructional Features

- Create new or modify existing resources using a simple editor that does not require technical expertise.
- Content is easily embedded in the platform. Most teacher created resources can be added.



# Total Integration

- An LMS is accessible anytime, anywhere, from any Internet enabled device.
- Class content, attendance and grades are all available within the LMS portal, saving time and resources.

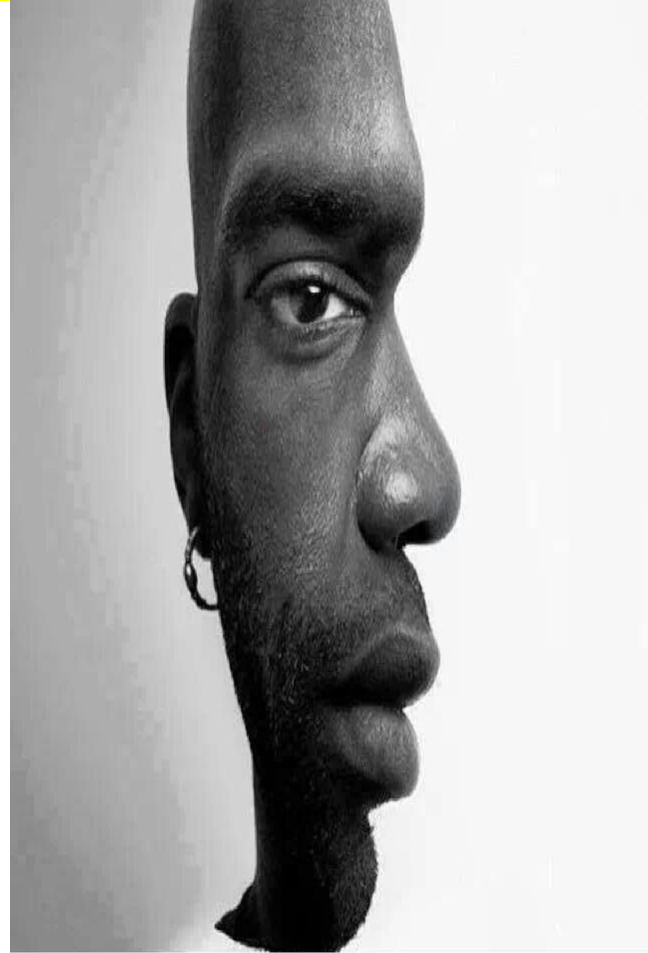
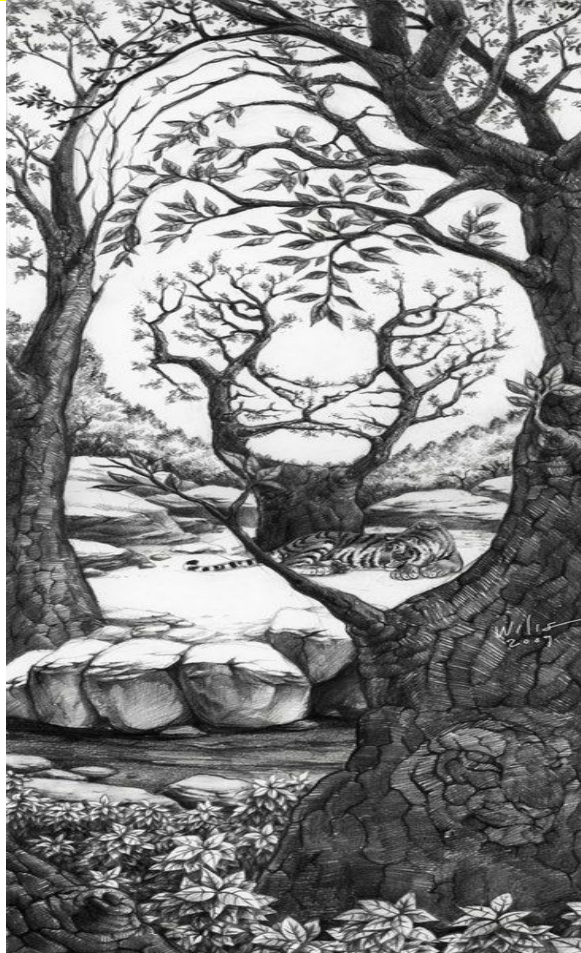


# Transformation

An LMS creates a transformational learning space for teaching and learning to ensure that all students are prepared to succeed in college, career and life.



# Considering A LMS From All Sides



# Closing Thoughts...

- An LMS is essential for 21<sup>st</sup> century learning
- All stakeholders benefit from LMS adoption
- Most major school districts have already, or are planning LMS adoption
- An LMS will enhance achievement for *all* students
- Next Meeting...February 21, 2018, 9:30 am until 3:00 p.m.