



► TRUSTEE AREA SCENARIOS

ALVORD UNIFIED SCHOOL DISTRICT

JANUARY 20, 2022



► TRUSTEE AREA PROCESS

DATE	ACTIVITY
November 2021	Cooperative Strategies prepares evaluation of existing voting areas and potential maps of adjusted Voting Areas
December 2, 2021	Draft Maps Posted to AUSD Website
December 9, 2021	Board Meeting: Presentation on Evaluation of Existing Voting Areas Review Initial Scenarios
December 2021 – January 2022	Cooperative Strategies revises scenarios based on Board and Public Input
January 13, 2022	Revised Maps Posted to AUSD Website
January 20, 2022	Board Meeting: Review Revised and/or Additional Scenarios
January – February 2022	Cooperative Strategies revises scenarios based on Board and Public Input
February 3, 2022	Revised Maps Posted to AUSD Website
February 10, 2022	Board Meeting: Adopt Final Trustee Areas
March 2022	Cooperative Strategies sends Final Trustee Areas Map to the County Registrars of Voters.

► CONSIDERATIONS IN TRUSTEE AREAS



Each area shall contain nearly equal number of inhabitants



Follow man-made and natural geographic features, as much as possible



Drawn to comply with the Federal Voting Rights Act



Respect incumbency, if possible



Compact and contiguous, as much as possible



Other local considerations (i.e., school boundaries, locations of school sites)



Respect communities of interest, as much as possible

► DISTRICT DEMOGRAPHICS

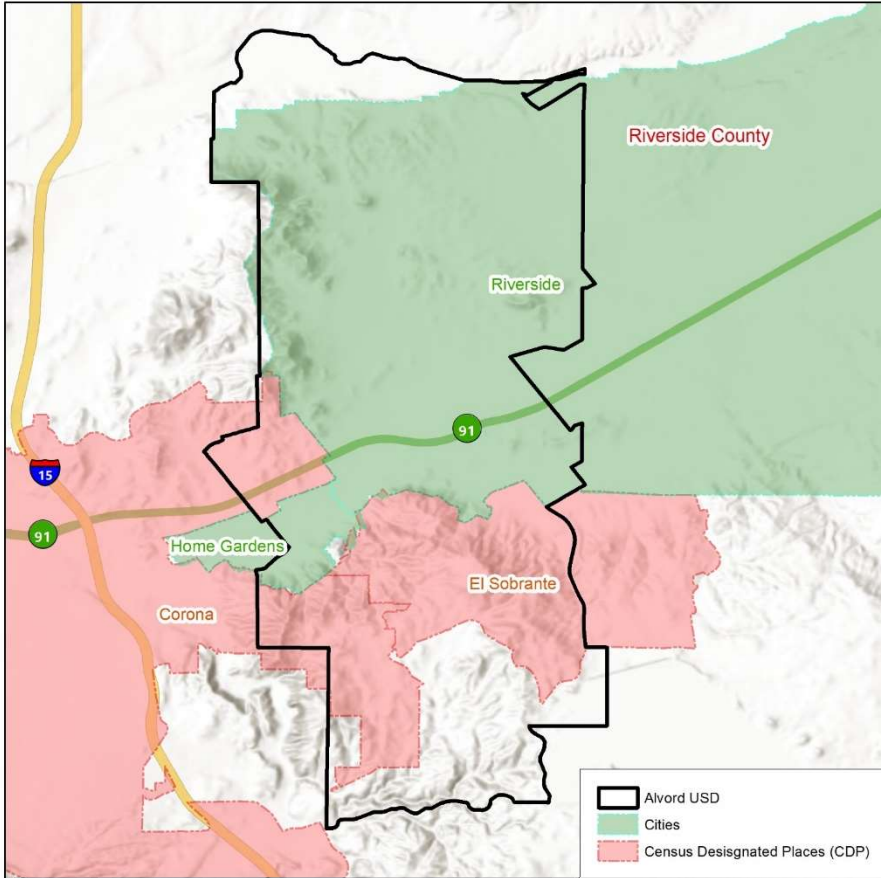
2020 CENSUS DATA



- Validated redistricting data was released by the California Department of Finance on September 20.
- This data showed substantial changes in the area served by AUSD from 2010 to 2020, including:
 - Overall population growth of over 6,487 (6.2%);
 - Total Variance of 17.9% based on 2020 Census (*Out of Compliance*)

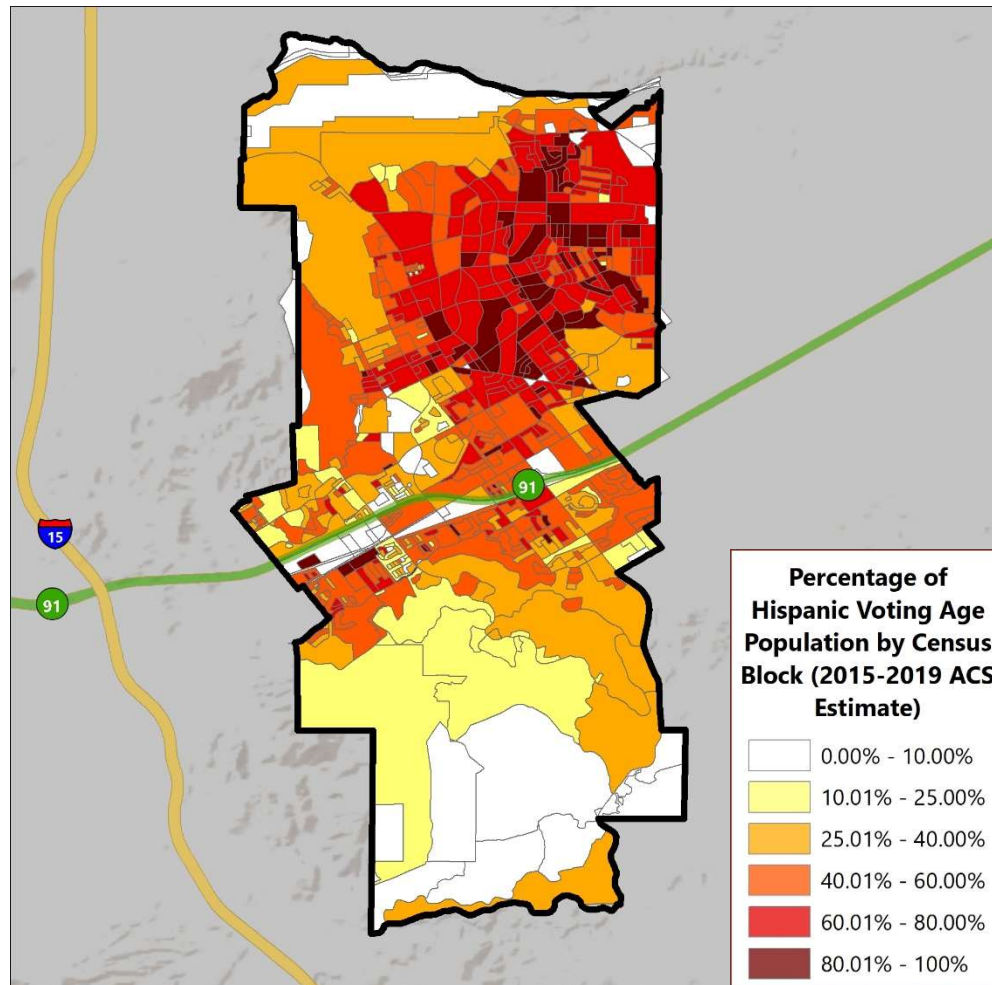
Trustee Area	2010 Census		2020 Census		Change	
	Total	Variance	Total	Variance	Population	Percent
Trustee Area 1	21,480	2.0%	23,596	5.5%	2,116	9.9%
Trustee Area 2	20,552	-2.4%	20,365	-8.9%	-187	-0.9%
Trustee Area 3	21,499	2.1%	22,044	-1.4%	545	2.5%
Trustee Area 4	20,013	-5.0%	24,368	9.0%	4,355	21.8%
Trustee Area 5	21,760	3.3%	21,418	-4.2%	-342	-1.6%
Total Population	105,304	8.3%	111,791	17.9%	6,487	6.2%

► DISTRICT DEMOGRAPHICS
2020 CENSUS DATA



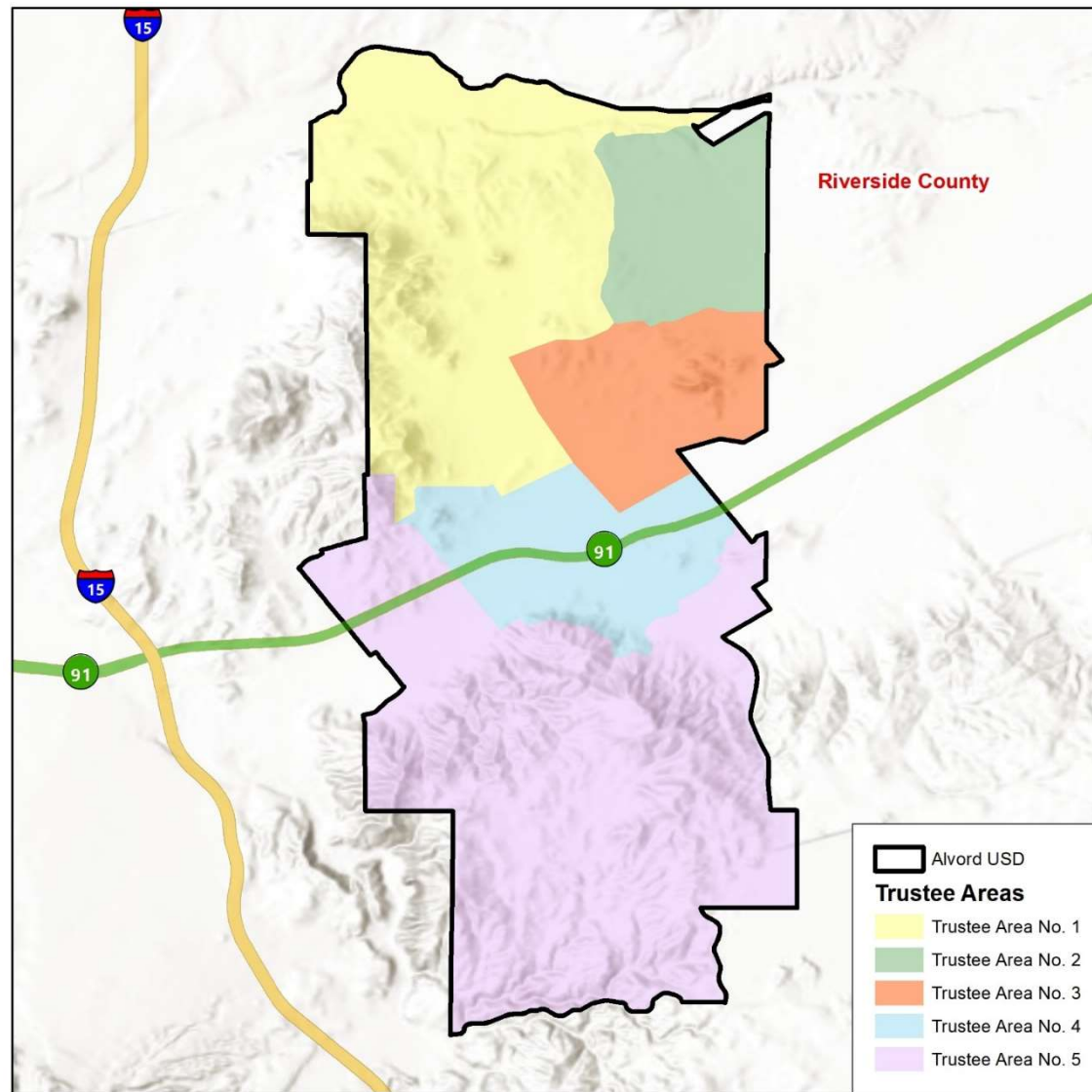
Population	Total Population		Age 18 and over	
	Total	%	Total	%
Hispanic/Latino	70,218	62.8%	49,690	59.1%
White	22,183	19.8%	18,950	22.5%
Black / African American	5,761	5.2%	4,598	5.5%
American Indian / Alaska Native	337	0.3%	290	0.3%
Asian	9,351	8.4%	7,810	9.3%
Native Hawaiian/ Pacific Islander	439	0.4%	307	0.4%
Two or More Races	570	0.5%	391	0.5%
Other	2,932	2.6%	2,008	2.4%
Total	111,791	100%	84,044	100%

► DISTRICT DEMOGRAPHICS
HISPANIC CITIZEN VOTING AGE POPULATION ESTIMATES



Population	2015-2019 CVAP	
	Total	%
Hispanic/Latino	38,104	52.5%
White	21,395	29.5%
Black / African American	4,673	6.4%
American Indian / Alaska Native	254	0.4%
Asian	6,750	9.3%
Native Hawaiian/ Pacific Islander	261	0.4%
Two or More Races	1,100	1.5%
Total	72,537	100%

► CURRENT TRUSTEE AREAS



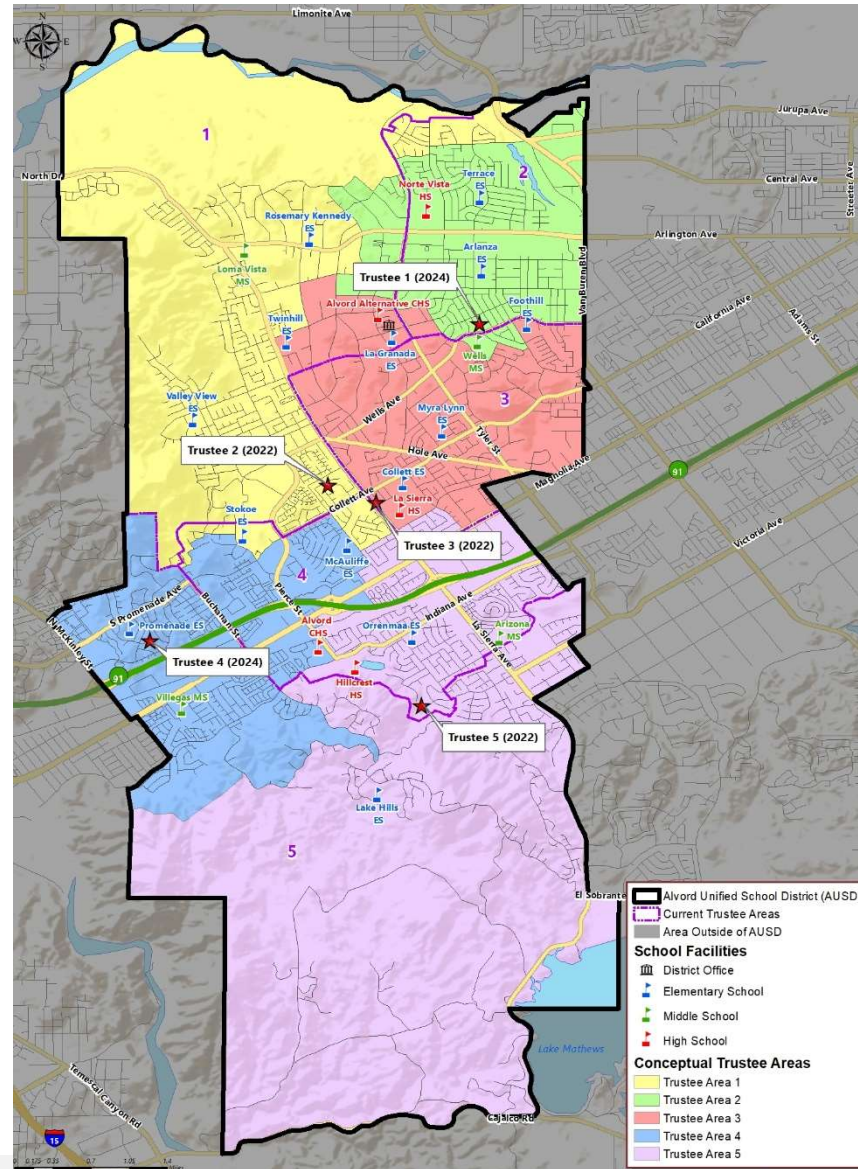
► CURRENT TRUSTEE AREAS

Census 2020 Total Population:	111,791		Ideal Trustee Area Size:		22,358		Total Variance:		17.9%	
TRUSTEE AREA	Trustee Area 1		Trustee Area 2		Trustee Area 3		Trustee Area 4		Trustee Area 5	
TP* vs. CVAP**	TP	CVAP	TP	CVAP	TP	CVAP	TP	CVAP	TP	CVAP
Population	23,596	16,240	20,365	10,737	22,044	13,673	24,368	16,126	21,418	15,761
Population Variance	5.5%	N/A	-8.9%	N/A	-1.4%	N/A	9.0%	N/A	-4.2%	N/A
Hispanic/Latino	62.3%	50.6%	82.3%	69.3%	72.7%	65.0%	56.6%	46.9%	41.8%	38.0%
White	21.5%	31.8%	9.4%	20.7%	14.3%	22.5%	23.5%	32.4%	29.5%	36.3%
Black/African American	3.9%	4.7%	3.3%	5.5%	5.0%	6.0%	6.1%	7.8%	7.4%	7.9%
American Indian/Alaska Native	0.3%	0.3%	0.4%	0.4%	0.2%	0.2%	0.3%	0.5%	0.3%	0.3%
Asian	8.2%	9.4%	2.7%	3.7%	5.2%	5.0%	9.2%	9.6%	16.4%	16.4%
Native Hawaiian/Other Pacific Islander	0.4%	0.6%	0.2%	0.0%	0.4%	0.4%	0.6%	0.6%	0.3%	0.1%
Other	0.5%	N/A	0.3%	N/A	0.4%	N/A	0.7%	N/A	0.7%	N/A
Two or More Races	2.9%	2.6%	1.4%	0.4%	1.8%	0.9%	3.2%	2.2%	3.7%	1.0%

*Total Population; Source: Redistricting Database for California, Published by Statewide Database on September 20, 2021

**Citizen Voting Age Population (CVAP); Source: American Community Survey, 2015-2019 Data

► CONCEPTUAL TRUSTEE AREAS SCENARIO 2



► CONCEPTUAL TRUSTEE AREAS
SCENARIO 2 - CONSIDERATIONS

- Scenario 2 was drawn in consideration of total population and current incumbents.
- Each Trustee Area was drawn to balance the population total with consideration of keeping only one Trustee per Trustee Area.

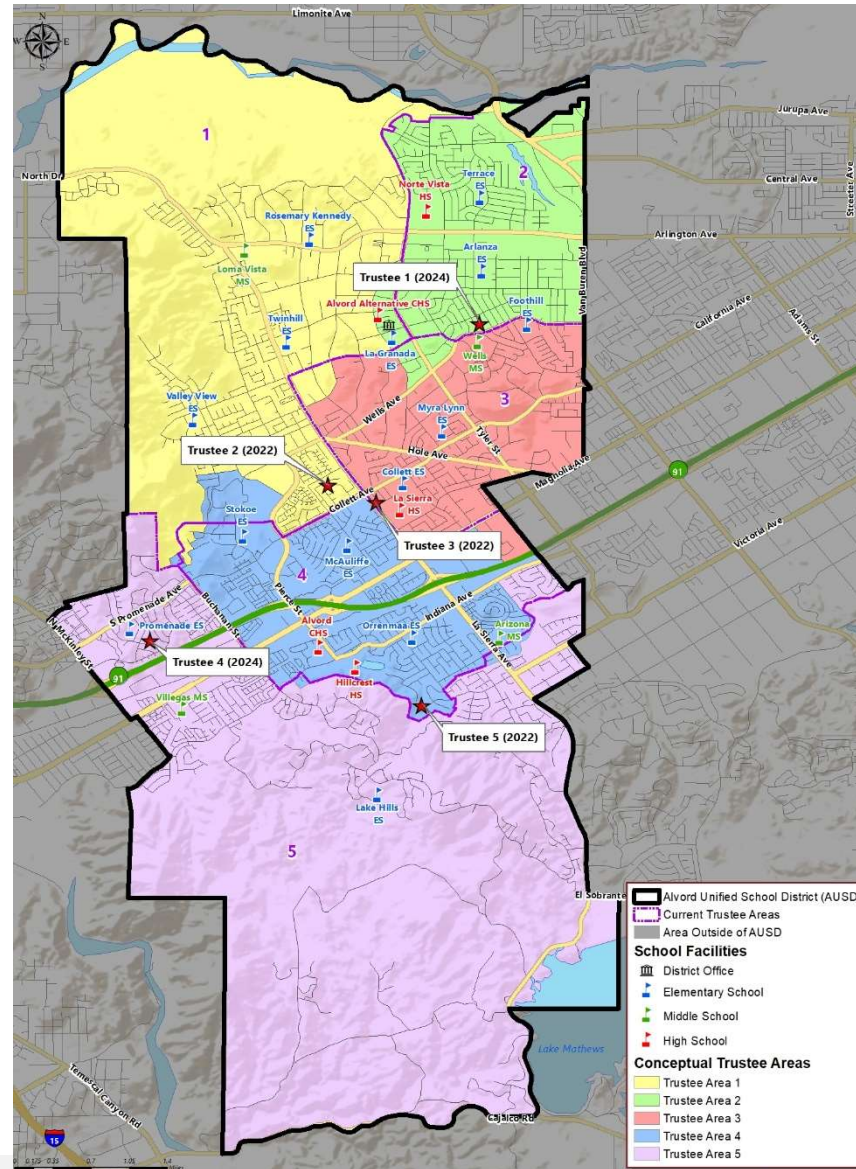
► **DEMOGRAPHICS**
SCENARIO 2

Total Population:	111,647		Ideal Trustee Area Size:		22,329		Variance:		1.4%	
TRUSTEE AREA	Trustee Area 1		Trustee Area 2		Trustee Area 3		Trustee Area 4		Trustee Area 5	
TP* vs. CVAP**	TP	CVAP	TP	CVAP	TP	CVAP	TP	CVAP	TP	CVAP
Population	22,467	15,989	22,267	11,664	22,291	13,767	22,151	15,997	22,471	15,040
Population Variance	0.6%	N/A	-0.3%	N/A	-0.2%	N/A	-0.8%	N/A	0.6%	N/A
Hispanic/Latino	57.8%	46.9%	82.3%	70.1%	73.9%	65.8%	47.9%	41.5%	52.2%	44.5%
White	23.6%	33.1%	9.5%	20.6%	14.0%	22.2%	26.0%	33.8%	26.1%	34.8%
Black/African American	4.8%	5.5%	3.2%	5.5%	4.4%	5.3%	7.5%	8.8%	5.8%	6.6%
American Indian/Alaska Native	0.3%	0.3%	0.4%	0.4%	0.2%	0.2%	0.3%	0.7%	0.3%	0.1%
Asian	9.2%	10.9%	2.6%	3.0%	4.9%	5.1%	14.0%	13.1%	11.0%	12.3%
Native Hawaiian/Other Pacific Islander	0.4%	0.6%	0.2%	0.0%	0.4%	0.4%	0.4%	0.4%	0.5%	0.3%
Other	0.6%	0.0%	0.2%	0.0%	0.4%	0.0%	0.6%	0.0%	0.7%	0.0%
Two or More Races	3.1%	2.8%	1.5%	0.4%	1.8%	0.9%	3.3%	1.6%	3.4%	1.4%

*Total Population; Source: Redistricting Database for California, Published by Statewide Database on September 20, 2021

**Citizen Voting Age Population (CVAP); Source: American Community Survey, 2015-2019 Data

► CONCEPTUAL TRUSTEE AREAS SCENARIO 3



► CONCEPTUAL TRUSTEE AREAS
SCENARIO 3 - CONSIDERATIONS

- Scenario 3 was drawn in consideration of balancing the total population evenly amongst all Trustee Areas.
- Trustee Area 3 was drawn to take in more population from Trustee Area 1 and 2.
- Trustee Area 4 was drawn to take in more population from Trustee Area 1 and 3.
- Trustee Area 5 was drawn to take in more population from Trustee Area 1 and 4.

► DEMOGRAPHICS

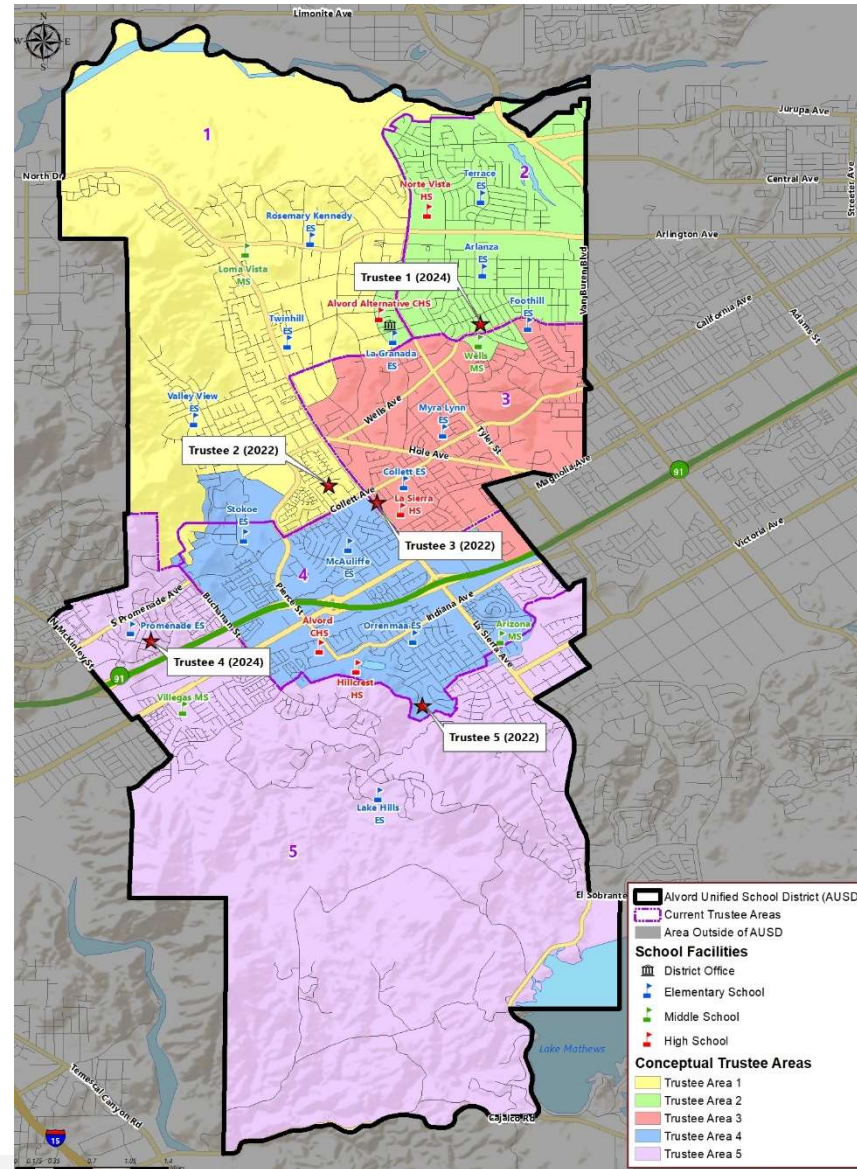
SCENARIO 3

Total Population:	111,647		Ideal Trustee Area Size:		22,329		Variance:		4.6%	
TRUSTEE AREA	Trustee Area 1		Trustee Area 2		Trustee Area 3		Trustee Area 4		Trustee Area 5	
TP* vs. CVAP**	TP	CVAP	TP	CVAP	TP	CVAP	TP	CVAP	TP	CVAP
Population	22,620	15,491	22,429	12,133	22,535	13,880	21,584	14,409	22,479	16,544
Population Variance	1.3%	N/A	0.4%	N/A	0.9%	N/A	-3.3%	N/A	0.7%	N/A
Hispanic/Latino	62.2%	50.5%	82.0%	69.5%	71.0%	63.3%	56.0%	46.3%	42.6%	38.4%
White	21.7%	32.1%	9.6%	20.3%	15.0%	23.6%	23.5%	32.4%	29.5%	36.3%
Black/African American	3.9%	4.8%	3.2%	5.3%	5.7%	6.8%	5.7%	7.4%	7.2%	7.7%
American Indian/Alaska Native	0.3%	0.3%	0.4%	0.5%	0.3%	0.1%	0.2%	0.6%	0.3%	0.3%
Asian	8.1%	9.2%	2.8%	4.1%	5.2%	4.9%	10.0%	10.4%	15.8%	16.0%
Native Hawaiian/Other Pacific Islander	0.4%	0.6%	0.2%	0.0%	0.5%	0.4%	0.6%	0.7%	0.3%	0.1%
Other	0.5%	0.0%	0.3%	0.0%	0.4%	0.0%	0.7%	0.0%	0.7%	0.0%
Two or More Races	2.9%	2.6%	1.4%	0.4%	1.9%	0.9%	3.3%	2.3%	3.6%	1.2%

*Total Population; Source: Redistricting Database for California, Published by Statewide Database on September 20, 2021

**Citizen Voting Age Population (CVAP); Source: American Community Survey, 2015-2019 Data

► CONCEPTUAL TRUSTEE AREAS SCENARIO 3A



► CONCEPTUAL TRUSTEE AREAS

SCENARIO 3A - CONSIDERATIONS

- Scenario 3A was drawn in consideration of balancing the total population evenly amongst all Trustee Areas.
- Trustee Area 3 was drawn to take in more population from Trustee Area 1 and 2.
- Trustee Area 4 was drawn to take in more population from Trustee Area 1 and 3.
- Trustee Area 5 was drawn to take in more population from Trustee Area 1 and 4.
- Suggested adjustment of area 2 and 3 was taken into consideration.

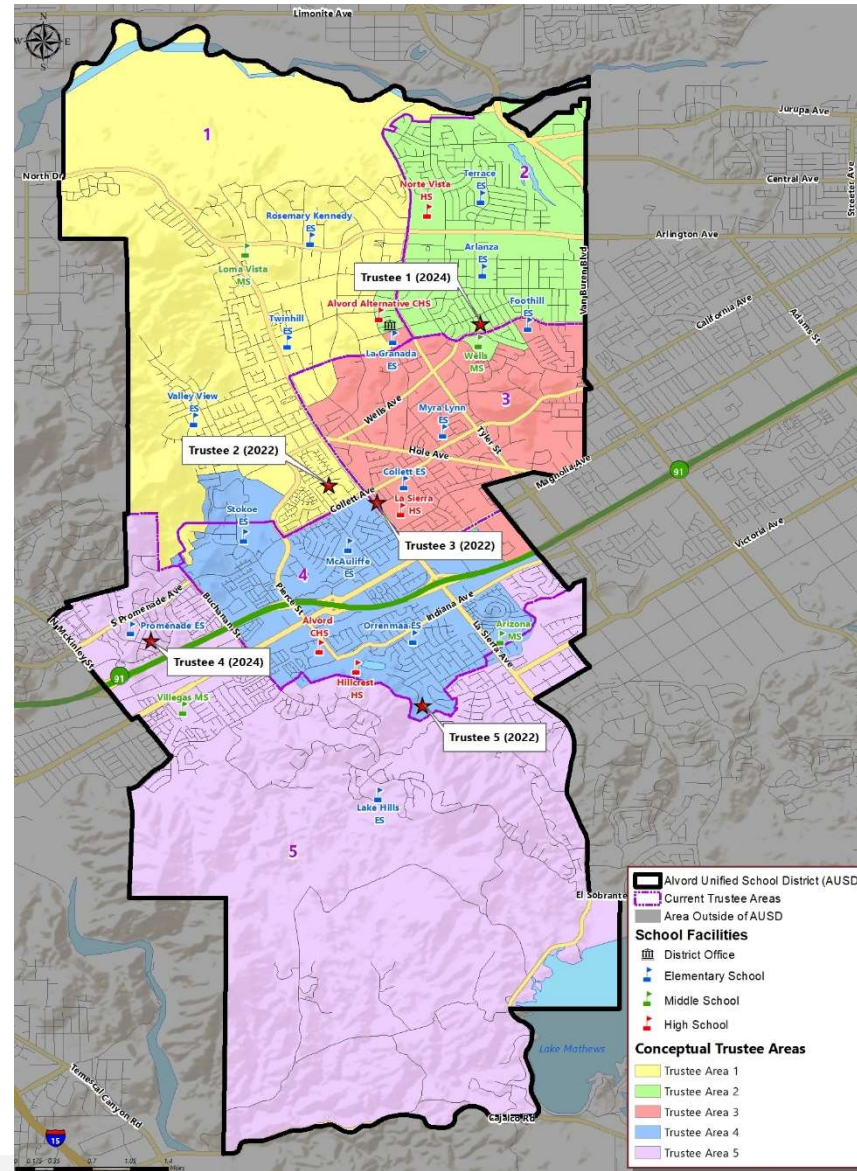
► **DEMOGRAPHICS**
SCENARIO 3A

Total Population:	111,647		Ideal Trustee Area Size:		22,329		Variance:		6.7%	
TRUSTEE AREA	Trustee Area 1		Trustee Area 2		Trustee Area 3		Trustee Area 4		Trustee Area 5	
TP* vs. CVAP**	TP	CVAP	TP	CVAP	TP	CVAP	TP	CVAP	TP	CVAP
Population	22,620	15,491	21,893	11,811	23,071	14,202	21,584	14,409	22,479	16,544
Population Variance	1.3%	N/A	-2.0%	N/A	3.3%	N/A	-3.3%	N/A	0.7%	N/A
Hispanic/Latino	62.2%	50.5%	82.0%	69.5%	71.3%	63.4%	56.0%	46.3%	42.6%	38.4%
White	21.7%	32.1%	9.7%	20.7%	14.9%	23.2%	23.5%	32.4%	29.5%	36.3%
Black/African American	3.9%	4.8%	3.2%	5.1%	5.7%	6.9%	5.7%	7.4%	7.2%	7.7%
American Indian/Alaska Native	0.3%	0.3%	0.4%	0.4%	0.3%	0.2%	0.2%	0.6%	0.3%	0.3%
Asian	8.1%	9.2%	2.8%	4.0%	5.2%	5.0%	10.0%	10.4%	15.8%	16.0%
Native Hawaiian/Other Pacific Islander	0.4%	0.6%	0.2%	0.0%	0.5%	0.4%	0.6%	0.7%	0.3%	0.1%
Other	0.5%	0.0%	0.3%	0.0%	0.4%	0.0%	0.7%	0.0%	0.7%	0.0%
Two or More Races	2.9%	2.6%	1.5%	0.4%	1.8%	0.9%	3.3%	2.3%	3.6%	1.2%

*Total Population; Source: Redistricting Database for California, Published by Statewide Database on September 20, 2021

**Citizen Voting Age Population (CVAP); Source: American Community Survey, 2015-2019 Data

► CONCEPTUAL TRUSTEE AREAS SCENARIO 3B



► CONCEPTUAL TRUSTEE AREAS

SCENARIO 3B - CONSIDERATIONS

- Scenario 3B was drawn in consideration of balancing the total population evenly amongst all Trustee Areas.
- Trustee Area 3 was drawn to take in more population from Trustee Area 1 and 2.
- Trustee Area 4 was drawn to take in more population from Trustee Area 1 and 3.
- Trustee Area 5 was drawn to take in more population from Trustee Area 1 and 4.
- Suggested adjustment of area 2 and 3 was taken into consideration.

► **DEMOGRAPHICS**
SCENARIO 3B

Total Population:	111,647		Ideal Trustee Area Size:		22,329		Variance:		7.1%	
TRUSTEE AREA	Trustee Area 1		Trustee Area 2		Trustee Area 3		Trustee Area 4		Trustee Area 5	
TP* vs. CVAP**	TP	CVAP	TP	CVAP	TP	CVAP	TP	CVAP	TP	CVAP
Population	22,620	15,491	21,795	11,758	23,169	14,255	21,584	14,409	22,479	16,544
Population Variance	1.3%	N/A	-2.4%	N/A	3.8%	N/A	-3.3%	N/A	0.7%	N/A
Hispanic/Latino	62.2%	50.5%	82.1%	69.4%	71.3%	63.5%	56.0%	46.3%	42.6%	38.4%
White	21.7%	32.1%	9.7%	20.7%	14.9%	23.1%	23.5%	32.4%	29.5%	36.3%
Black/African American	3.9%	4.8%	3.2%	5.1%	5.7%	6.9%	5.7%	7.4%	7.2%	7.7%
American Indian/Alaska Native	0.3%	0.3%	0.4%	0.4%	0.3%	0.2%	0.2%	0.6%	0.3%	0.3%
Asian	8.1%	9.2%	2.8%	3.9%	5.2%	5.0%	10.0%	10.4%	15.8%	16.0%
Native Hawaiian/Other Pacific Islander	0.4%	0.6%	0.2%	0.0%	0.5%	0.4%	0.6%	0.7%	0.3%	0.1%
Other	0.5%	0.0%	0.2%	0.0%	0.4%	0.0%	0.7%	0.0%	0.7%	0.0%
Two or More Races	2.9%	2.6%	1.5%	0.4%	1.8%	0.9%	3.3%	2.3%	3.6%	1.2%

*Total Population; Source: Redistricting Database for California, Published by Statewide Database on September 20, 2021

**Citizen Voting Age Population (CVAP); Source: American Community Survey, 2015-2019 Data

A row of yellow school buses is parked in a grassy field under a cloudy sky. A large, stylized, semi-transparent 'S' graphic is overlaid on the image, framing the word 'QUESTIONS' in the center.

QUESTIONS