

**BEFORE THE BOARD OF TRUSTEES  
OF THE NAPA VALLEY UNIFIED SCHOOL DISTRICT  
NAPA COUNTY, CALIFORNIA  
RESOLUTION NO. 20-08  
RESOLUTION APPROVING CLOSURE OF MT. GEORGE ELEMENTARY SCHOOL  
AND CONSOLIDATION WITH ALTA HEIGHTS ELEMENTARY SCHOOL AND  
DETERMINING THAT THE PROJECT IS EXEMPT FROM THE CALIFORNIA  
ENVIRONMENTAL QUALITY ACT**

**WHEREAS**, throughout the 2018-2019 fiscal year and ongoing, the Napa Valley Unified School District ("District") has undergone a detailed and holistic review of its budget in order to assess and remedy financial challenges including dramatic declining enrollment and, as a result, declining revenues; and

**WHEREAS**, after reviewing financial and enrollment data, District staff recommended that the Board of Trustees ("Board") examine the possibility of closing and/or consolidating some of the District's smaller campuses as part of an overall plan to reduce annual operational costs and maintain long term financial stability in the District; and

**WHEREAS**, on August 8, 2019, pursuant to Education Code sections 17387, *et seq.*, the Board convened a "7-11" District Advisory Committee ("Committee") consisting of 11 members and 4 alternates to advise the Board on potential school closures and/or consolidations and on the use of real property no longer needed for school purposes; and

**WHEREAS**, the Committee met on August 20, September 3, September 17, and October 1. During each meeting, the Committee received and considered public comment as well as information from District staff regarding budget, financial status, historical enrollment analysis, projected enrollment trends, facilities capacity, and other policy considerations; and

**WHEREAS**, the school sites that were selected for review by the Committee included Mt. George Elementary School ("Mt. George"), a public elementary school located at 1019 Second Avenue, Napa, California; and

**WHEREAS**, on October 1, 2019, the Committee approved its Report on Recommendations Regarding Small School Closures and Consolidations ("Report"), which the Chair and Vice-Chair of the Committee presented to the Board on October 15, 2019. The Report recommends, among other things, that the Board take action to close Mt. George and consolidate it with Alta Heights Elementary School through an appropriate boundary adjustment; and

**WHEREAS**, the Report also recommended the following implementation measures ("Implementation Measures") related to closure of Mt. George and consolidation with Alta Heights Elementary School:

- That the Board of Education revise its Open Enrollment Policy to provide priority for students affected by school closures;

- That the Board of Education review the before and after school programs that support the additional students that will be coming to them via Mt. George Elementary School. The Committee values the afterschool programs and strongly recommends that District staff work with community agencies and work to ensure that the programs continue, because of the value of these programs to the students. The Committee also recommends that each program at Alta Heights Elementary School be able to absorb the increase of the programs due to the increase in enrollment;
- That the Board of Education have staff develop and facilitate a process for the consolidated school at Alta Heights to determine the instructional program, to include consideration of the International Baccalaureate Program;

**WHEREAS**, because of declining enrollment, financial challenges, and based on the recommendations of the Committee, the District now desires to take action to close Mt. George and consolidate it with Alta Heights Elementary School as of June 30, 2020, the last day of the fiscal year when the current academic school year ends; and

**WHEREAS**, the closure of Mt. George and consolidation with Alta Heights Elementary School (collectively, the “Project”) constitute a project for purposes of the California Environmental Quality Act (Pub. Resources Code, § 21000, *et seq.*, (“CEQA”));

**WHEREAS**, Public Resources Code section 21080.18 provides that CEQA does “not apply to the closing of any public school in which kindergarten or any of grades 1 through 12 is maintained or the transfer of students from that public school to another school if the only physical changes involved are categorically exempt”; and

**WHEREAS**, the District has considered the effects of the Project and has determined that the Project will not have any significant effect on the environment; and

**WHEREAS**, as detailed below, no physical changes are anticipated to result from the Project, thus the statutory exemption contained in Public Resources Code section 21080.18 applies to the Project; and

**WHEREAS**, not all students currently attending Mt. George Elementary School are expected to attend Alta Heights Elementary School, since historically, approximately 30% of the District’s students choose to utilize the District’s Open Enrollment Policy to attend a school other than their school of residence. Nevertheless, Alta Heights Elementary School has sufficient capacity such that, even if all of the students from Mt. George are relocated to Alta Heights Elementary School and all existing students at Alta Heights Elementary School remain there, there would be no need to build new facilities or otherwise increase the capacity of the school; and

**WHEREAS**, the student capacity of classrooms that are currently in use at Alta Heights Elementary School is 450 students, however, there are two additional rooms in the existing facility that could also be used as classrooms. Based on a classroom loading factor of 25, Alta Heights Elementary School therefore has existing capacity to house at least 500 students. Also,

the District uses classroom loading factors of 24 for transitional kindergarten, kindergarten, and first grade, 26 for second and third grade, and 32 for fourth and fifth grade, for a weighted average of approximately 27 students per classroom. As a result, Alta Heights Elementary School has existing capacity to house up to 540 students without the need to add any additional classroom space; and

**WHEREAS**, as of October 2, 2019, the student enrollment at Mt. George is 220 and the student enrollment at Alta Heights Elementary School is 286; and

**WHEREAS**, even if all of the students attending Mt. George Elementary School in the current school year attend Alta Heights Elementary School in the 2020-2021 school year, which is not expected due to historical open enrollment trends and projected declining enrollment, the total enrollment at Alta Heights Elementary School for 2020-2021 would be approximately 506 students; and

**WHEREAS**, Alta Heights Elementary School therefore has existing facility capacity to absorb all of the current student body of Mt. George without the need for any increase in capacity through construction or addition of new classrooms; and

**WHEREAS**, the CEQA Guidelines (Cal. Code Regs., tit. 14, §§ 15000, *et seq.*) exempt from CEQA evaluation projects which consist of minor additions to existing schools within existing school grounds where the addition does not increase original student capacity by more than 25% or ten classrooms, whichever is less (CEQA Guidelines, § 15314). Since the District will not need to add classroom space at Alta Heights Elementary School as a result of the Project, it will clearly not increase capacity by the lesser of 25% or ten classrooms, and the exemption therefore applies; and

**WHEREAS**, the only physical change is the location of the students, thus the Project is statutorily exempt from CEQA under Public Resources Code section 21080.18 and categorically exempt under State CEQA Guidelines section 15314; and

**WHEREAS**, the District has conducted traffic analysis to confirm that the majority of the students that are currently attending Mt. George do not reside within the existing attendance area for Mt. George, and, as shown on slide 6 of the Boundary Presentation attached hereto as Exhibit A and incorporated by reference, the majority of such students reside in central Napa Valley and thus closer to Alta Heights Elementary School, which is also closer to Highways 29 and 121; as a result, closure to Mt. George and consolidation with Alta Heights Elementary School will reduce vehicle miles traveled pursuant to California Code of Regulations, title 14, § 15064.3; and

**WHEREAS**, the District has considered public comments received by the District related to the Project, including at its meetings on October 15 and 24, 2019, and all content and comment received by the 7-11 Committee at its meetings on August 20, September 3, September 17, and October 1; and

**WHEREAS**, the Project does not involve any of the following and so is eligible for a categorical exemption as described above under State CEQA Guidelines section 15300.2:

- (a) the cumulative impact of successive projects of the same type in the same place, which over time are significant;
- (b) an activity where there is a reasonable possibility that the activity will have a significant effect on the environment due to unusual circumstances;
- (c) a project which may result in damage to scenic resources, including but not limited to trees, historic buildings, rock outcroppings or similar resources, within a highway officially designated as a state scenic highway;
- (d) a hazardous waste site which is included on any list compiled pursuant to Section 65962.5 of the Government Code;
- (e) a project which may cause a substantial adverse change in the significance of a historical resource; and

**WHEREAS**, the CEQA Guidelines also exempt from further CEQA review those activities that are covered by the general rule that CEQA applies only to projects which have the potential for causing a significant effect on the environment. Where it can be seen with certainty that there is no possibility that the activity in question may have a significant effect on the environment, the activity is not subject to CEQA (the "Common Sense Exemption"); and

**WHEREAS**, upon a determination that the Project is exempt from CEQA, the District is entitled to file a Notice of Exemption with the County Clerk pursuant to California Code of Regulations, Title 14, section 15062.

\*\*\*\*\*

**NOW, THEREFORE, BE IT FOUND, DETERMINED AND RESOLVED BY THE BOARD OF EDUCATION OF THE NAPA VALLEY UNIFIED SCHOOL DISTRICT, NAPA COUNTY, CALIFORNIA, AS FOLLOWS:**

1. The foregoing recitals are adopted as true and correct.
2. Mt. George Elementary School, located at 1019 Second Avenue, Napa, California, shall be closed and consolidated with Alta Heights Elementary School as of June 30, 2020, the last day of the fiscal year when the current academic school year ends. As a result, the Board hereby approves an adjustment to the District's boundaries so that, effective July 1, 2020, all of the current attendance area for Mt. George Elementary School will be included within the attendance area for Alta Heights Elementary School, as described and discussed on slides 9 and 10 of the Boundary Presentation attached hereto as Exhibit A.
3. The Board hereby approves the Project and finds and determines that the Project is in the

best interests of the District, its students, and the community.

4. The Board finds that the Project will not have a significant effect on the environment.
5. The Project is hereby found to be exempt from the requirements of CEQA pursuant to Public Resources Code section 21080.18 and CEQA Guidelines section 15314, as set forth above.
6. District staff are hereby authorized and directed to prepare and file a Notice of Exemption for the Project in accordance with CEQA and the State CEQA Guidelines, and the findings set forth in this Resolution.
7. The Board also directs District staff to consider the feasibility of the Committee's recommended Implementation Measures and, if applicable, bring such Measures back to the Board for future consideration or action.
8. The Superintendent and/or her designee are authorized and directed to take such further actions as may be necessary and appropriate to carry out the intent of this Resolution.

The foregoing Resolution was adopted at a meeting of the Governing Board of the Napa Valley Unified School District on October 24, 2019, by the following vote:

AYES:

NOES:

ABSTAIN:

ABSENT:

---

Board President  
Napa Valley Unified School District

CERTIFIED TO BE A TRUE  
AND CORRECT COPY:

---

Clerk  
Napa Valley Unified School District

## **EXHIBIT A**

### **BOUNDARY PRESENTATION**

**[Attached]**

Clerk  
Napa Valley Unified School District

**EXHIBIT A**

**BOUNDARY PRESENTATION**

**[Attached]**

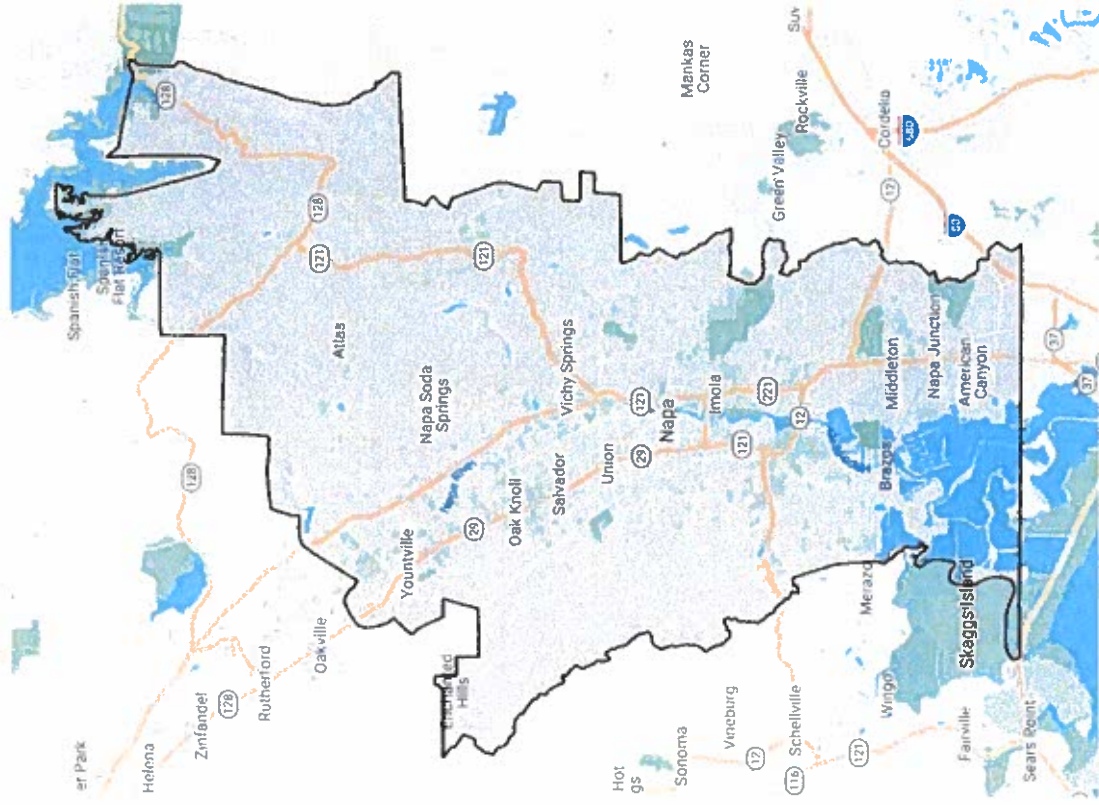
# Boundary Presentation

7.11 Committee Meeting #3

9.17.19

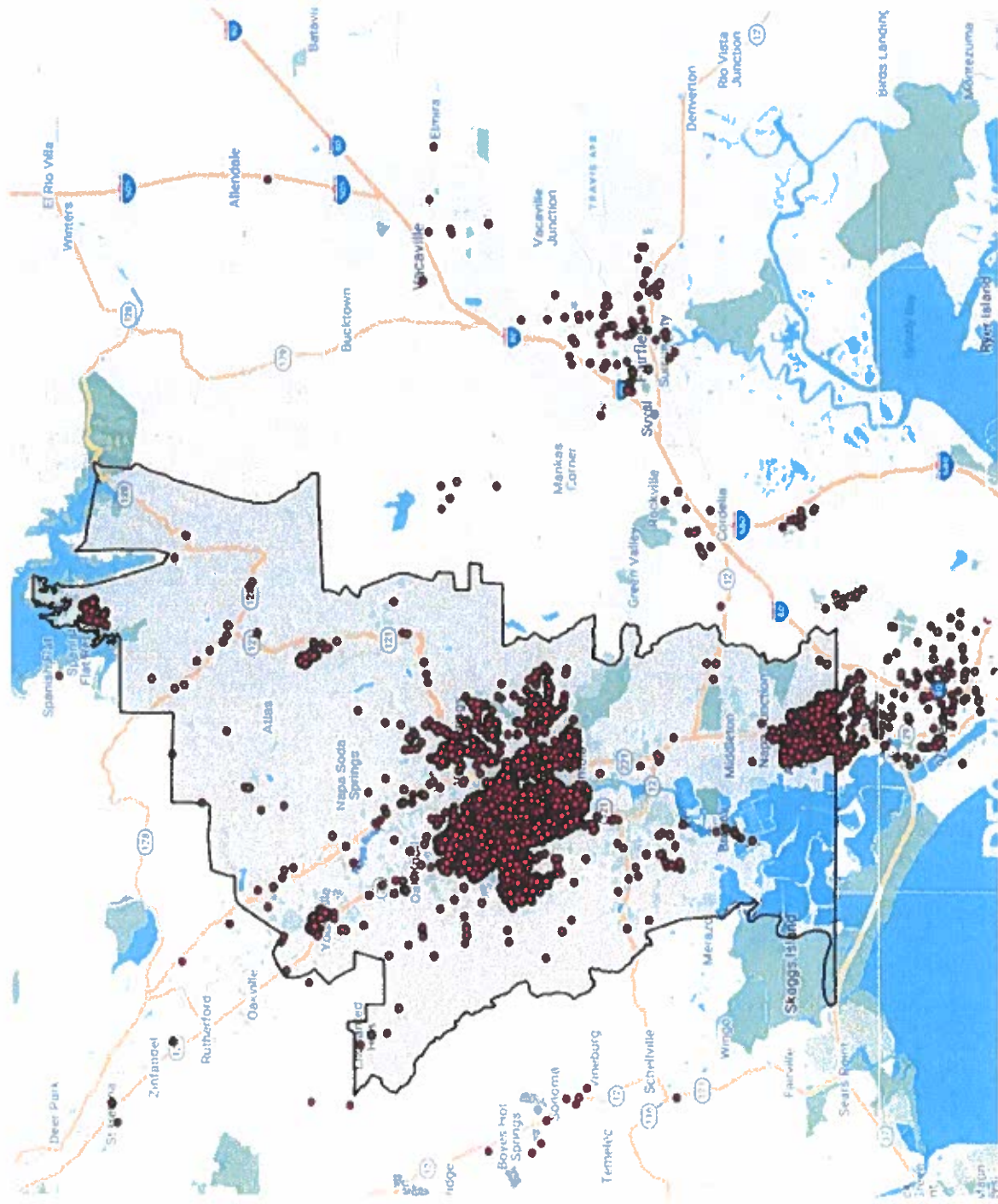


# District Boundary

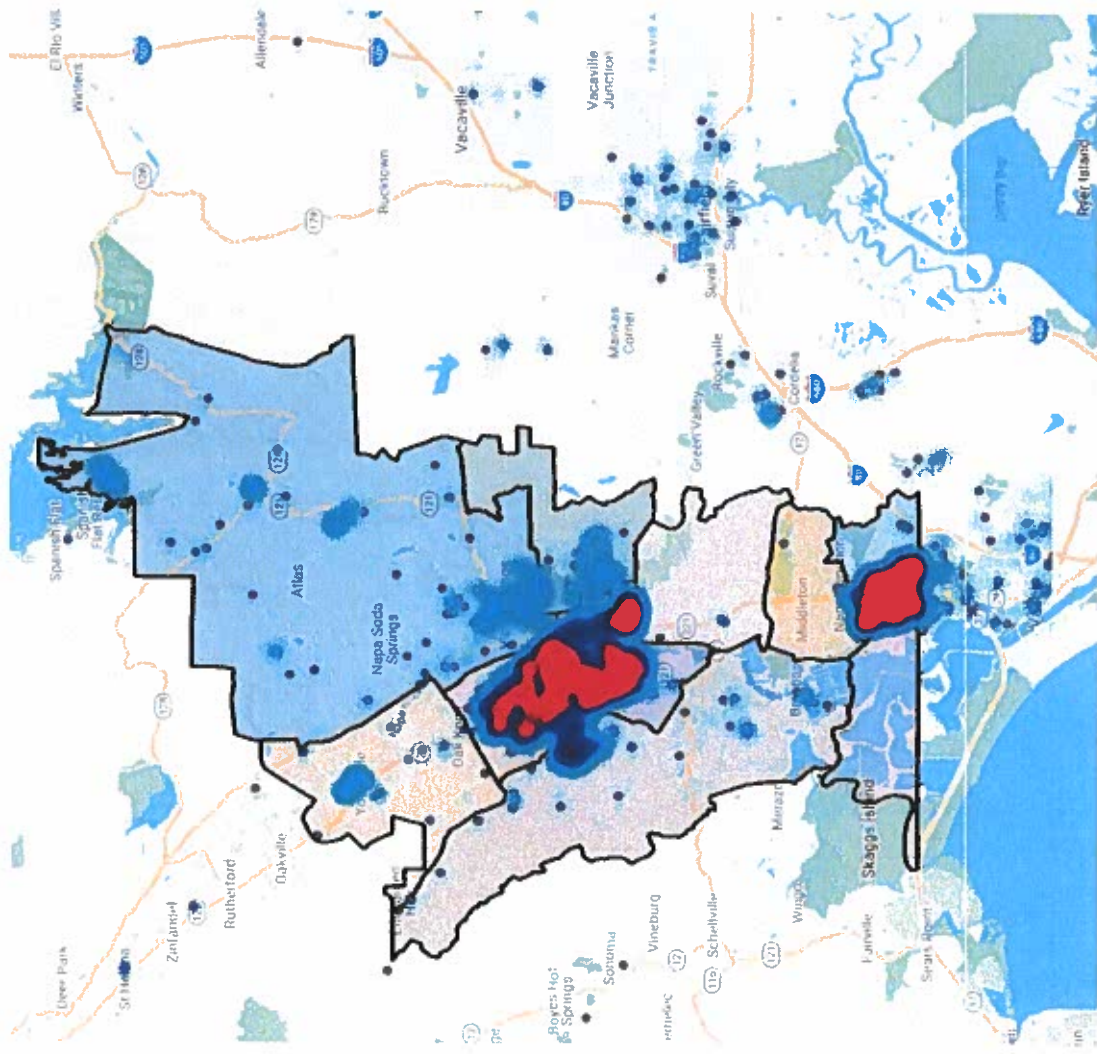




# District Boundaries with Student Plotted



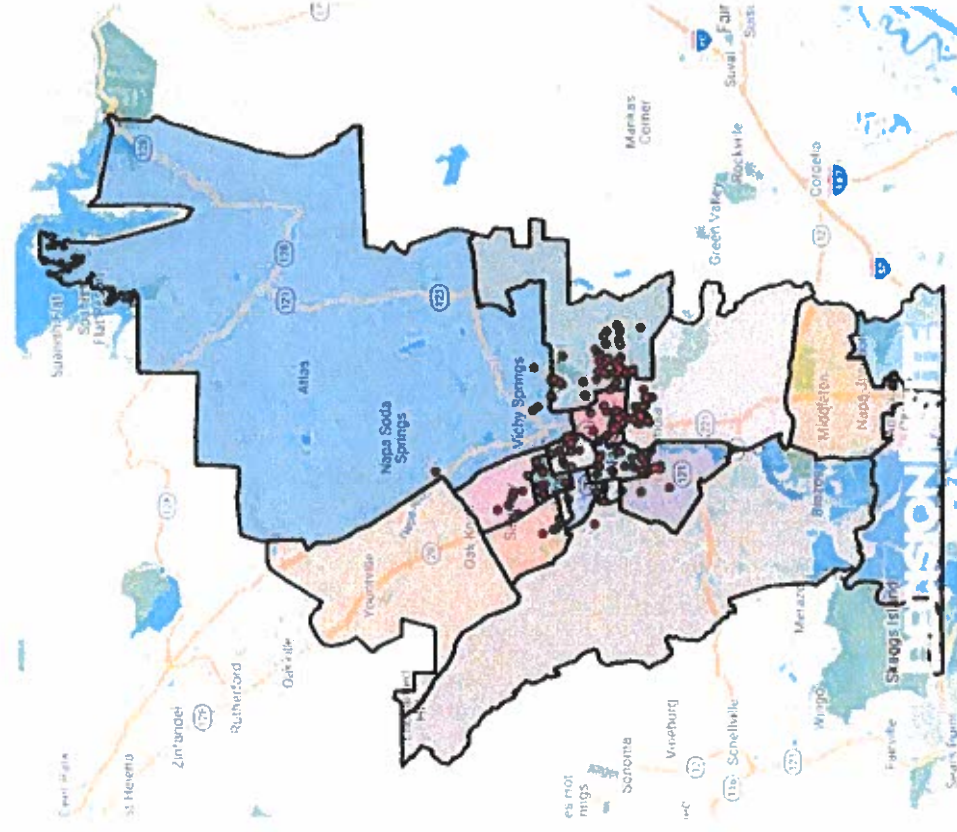
# Elementary Boundaries Heat Map







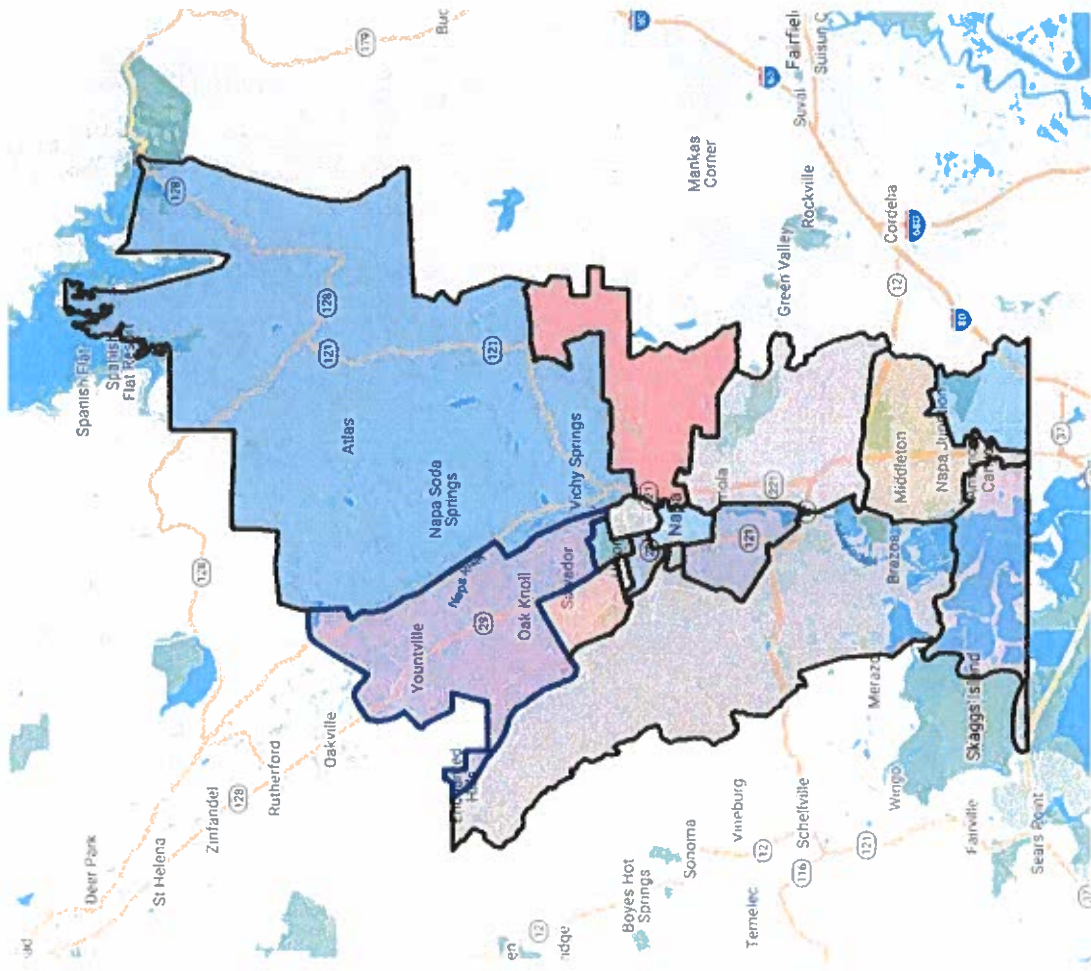
# Mt. George Elementary with Students Plotted



# Yountville Proposed Boundary

- Yountville and Willow to combine boundaries
- Students that live in the Yountville boundary to become residents of Willow Boundary
- Willow becomes the new home school for resident students of Yountville Elementary

# Yountville and Willow Proposed Boundary

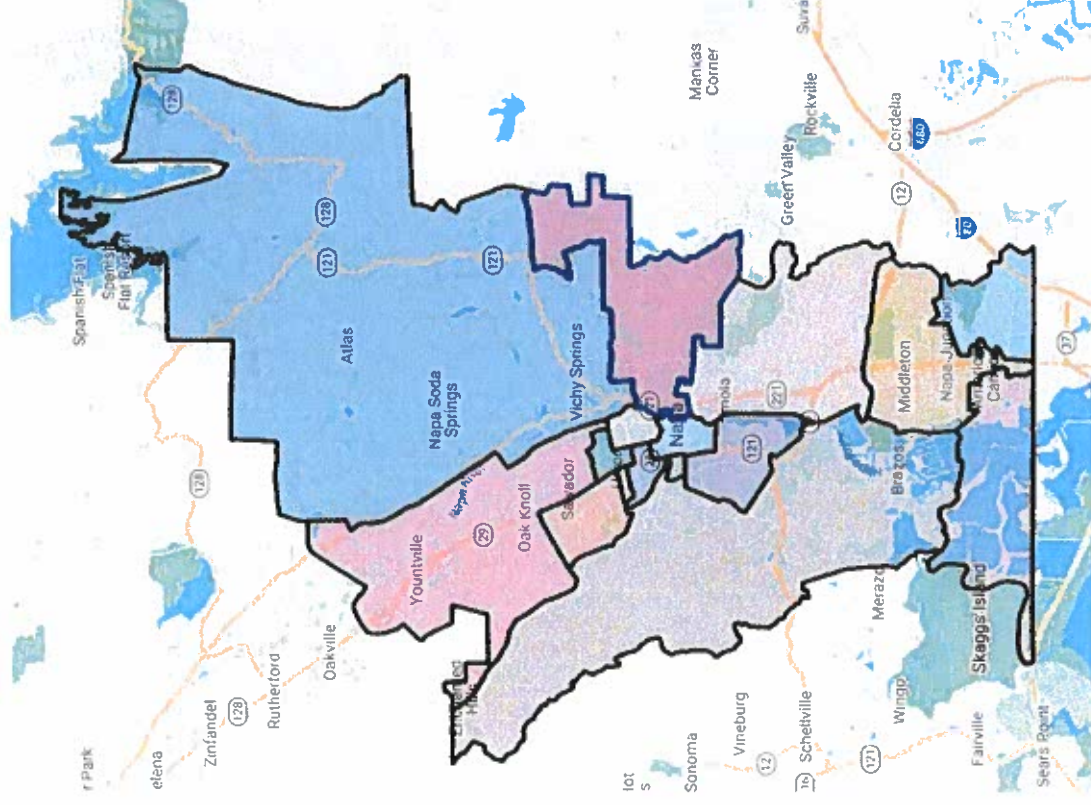




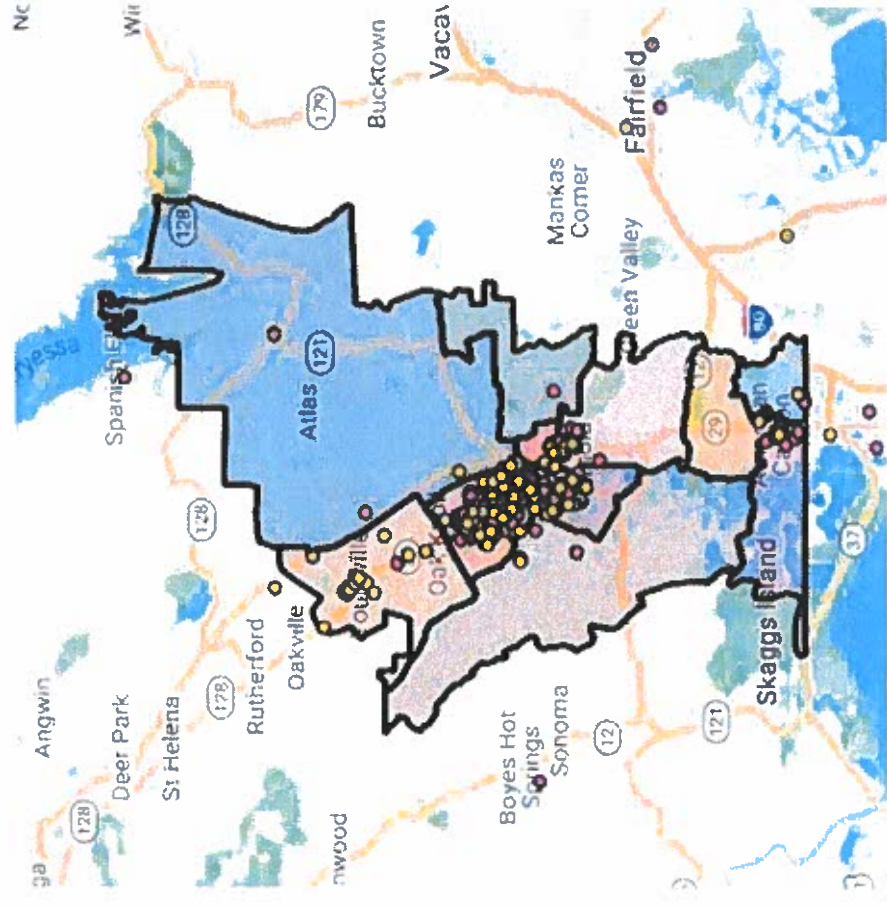
# Mt. George Proposed Boundary

- Mt. George and Alta Heights to combine boundaries
- Students that live in the Mt. George boundary to become residents of Alta Heights
- Alta Heights becomes the new home school for resident students of Mt. George Elementary

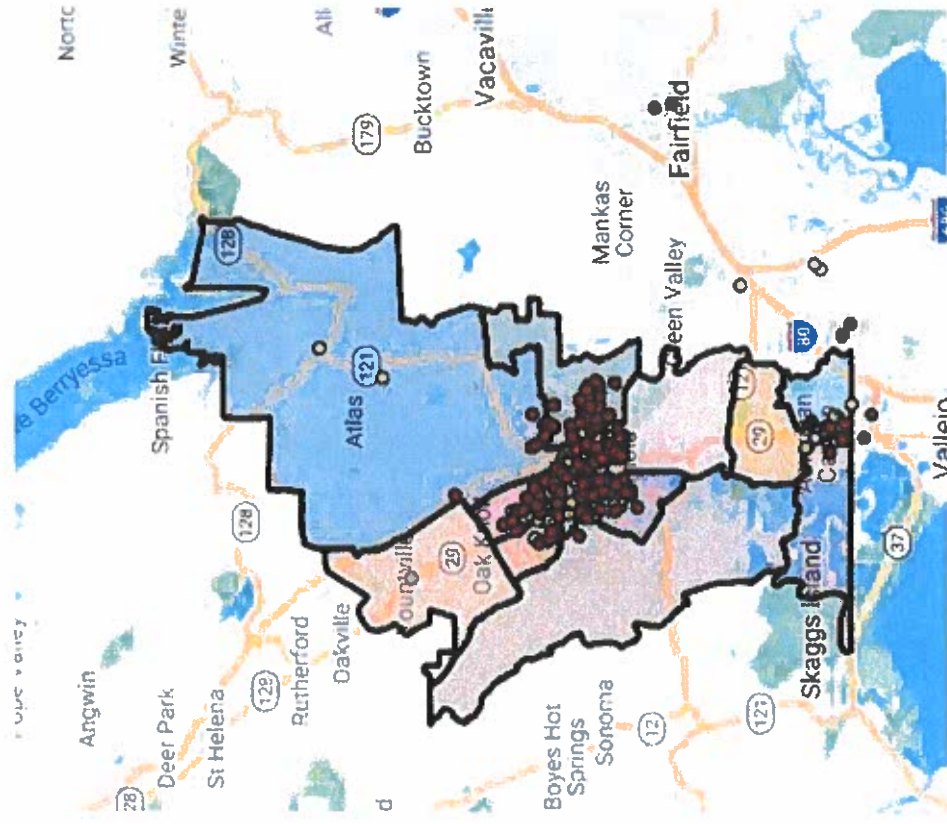
# Mt. George and Alta Height Proposed Boundary



# Yountville and Willow Students Plotted



# Mt. George and Alta Heights Students Plotted





# Open Enrollment

