

Reopening NVUSD in 2020-2021

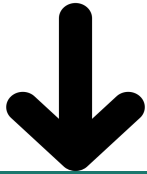


NVUSD

NAPA VALLEY UNIFIED SCHOOL DISTRICT

Operating NVUSD Schools During COVID-19

Phased Re-entry Approach Depending on Public Health Conditions



Phase One

- Robust Distance Learning for “In Person Students” with support services and student engagement opportunities on campus
- Virtual Learning Academy for families who choose remote learning for the semester during these uncertain times

Phase Two

- Phased approach to in person hybrid model; implementing components of the hybrid schedule before scaling systems and operations
- Virtual Learning Academy continues

Phase Three

- Hybrid In Person 5 days a week in morning and afternoon cohorts TK-12
- Virtual Learning Academy continues

Phase Four

- In person 5 day full day schedule option
- Virtual Learning Academy continue

Superintendent Comments to Board

Our goal:

5 day hybrid in person am/pm schedule when public health conditions allow; the start date of the implementation of the hybrid in person option remains contingent upon public health conditions and employee negotiations on safety issues; we remain hopeful about moving to an in person model in Napa County across our 28 schools but remain attentive to public health trends and safety guidelines



Superintendent Comments to Board

Staff Recommendation for Reopening:

Staff recommends that we start in Phase one and move into Phase two and three as soon as the public health conditions allow.

Presenters: The Team

- Dana Page, Assistant Superintendent, Human Resources
- Pat Andry-Jennings, Assistant Superintendent, Instructional Services
- Mike Pearson, Assistant Superintendent, Operational Services
- Rob Mangewala, Assistant Superintendent, Business Services



Connection to the Strategic Plan

GOAL #1

Student Learning, Achievement and Access

GOAL #2

Effective Employee Relations and Resource Management

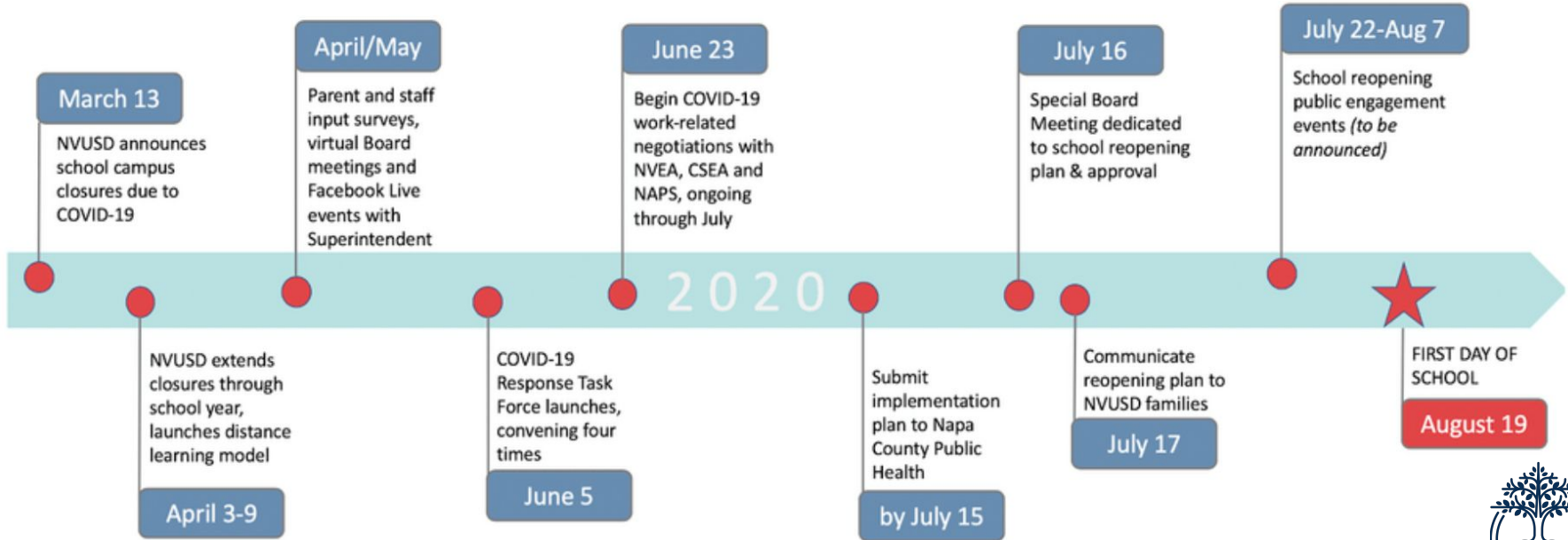


Outcomes

- Understand the work and recommendation of the Covid-19 Response Task Force and the assigned working groups
- Understand the proposed reopening of school models
- Learn about the work being done to prepare and modify campuses for in person instruction
- Understand current health and safety recommendations
- Learn about the recommendation to the school board during uncertain times

Timeline

School Reopening Timeline 2020



Task Force Meetings

Session #1 June 10

- Analyzed stakeholder survey data
- Explored employee group interests

Session #2 June 12

- Studied health information regarding Covid-19
- Examined employee constraints
- Identified planning assumptions

Session #3 June 17

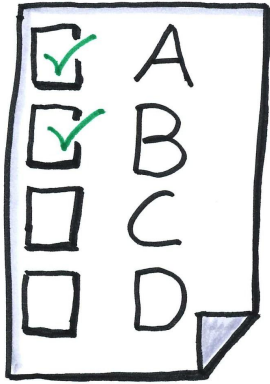
- Debated promising designs

Session #4 June 19

- Developed planning considerations and guiding principles
- Made a recommendation for work groups



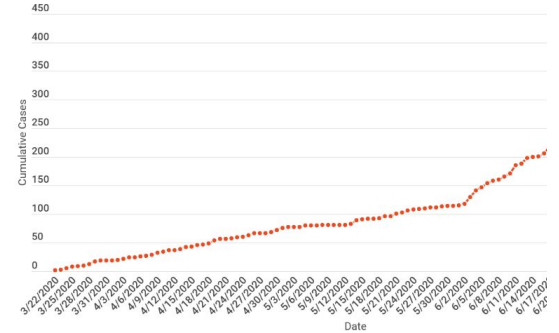
Task Force Data Review



Parent/Staff Survey



Staff Interests



Task Force Recommendation

- **Bring as many students back into classrooms as possible**
- **Adhere to public health guidelines to ensure the health and safety of students and staff**
- **Develop structures that meet the needs at each level**
- **Provide virtual access to classrooms (ideally in real-time) as an alternatives to in-person attendance**
- **Create a plan and be ready for stricter health guidelines if necessary.**



Guiding Principles

- **Plan and act with fidelity to strategic plan.**
- **Ensure access and equity for all students.**
- **Prioritize student, faculty, and staff health, safety, and wellbeing.**
- Maintain learning with a preference for in-person learning over distance learning as long as it is safe to do so.
- Explore and utilize all alternative paths to graduate and instructional schedules that will reduce contact.
- Ensure that faculty and staff are prepared to move nimbly between each instructional design as the health and safety conditions allow.

Guiding Principles

- Ensure hygiene- and health-related policies are research-based, clearly communicated, effectively implemented, and diligently enforced.
- Communicate and engage regularly with stakeholders.
- Engage parents/guardians as partners in execution of this work
- Steward the resources of our district to effectively reach our health, safety, and learning goals within our fiscal restraints.
- Prepare workforce for successful implementation.
- Expect flexibility and willingness to work differently because this is an unprecedented crisis.

Got to Work!

- NVUSD leadership focused predominantly on the implementation of an **in person** model in order to respond to the charge of the task force
- Why? Implementing **in person instruction requires intense modifications** to the work day, student schedules, facilities, and campus operations
- We also worked on the development a more **robust virtual learning option** for parents who would choose a virtual learning option no matter what while the pandemic remained a factor
- Collaborated closely with **Napa County Public Health and Napa County Office of Education**

40 Days of Planning & Preparation



NVUSD
NEVADA VALLEY UNIFIED SCHOOL DISTRICT



NVUSD
KAPA VALLEY UNIFIED SCHOOL DISTRICT

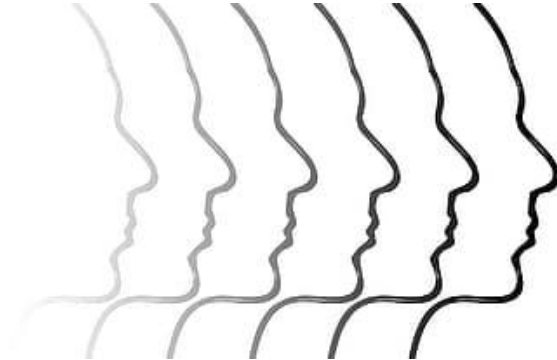
Updates this Week

- **Infection rates** in Napa County are increasing, and thus the public health trends are moving in a less favorable direction
- Napa County has reverted back to **more restrictions across sectors**
- NCOE and NCPH put out **stricter guidance for schools** in response to the trending
- California Teachers' Association (CTA) has forced a strong list of demands and expectations of school districts across the state that the unions insist must be met in order to open for in person instruction
- Napa Valley Educators' Association (NVEA) has expressed **concerns, interests, and expectations concerning employee safety**. They want an agreement that certain criteria be met before reopening in person. Negotiating MOU for three models.

Concerns

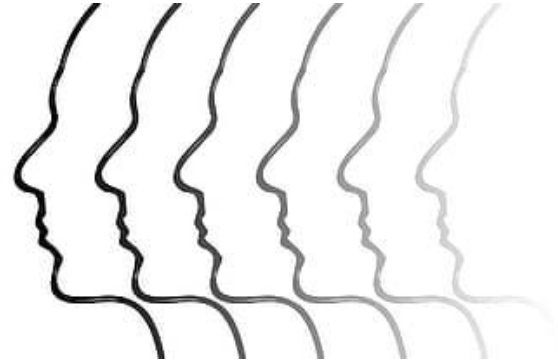
Confidence In Safety Measures

- Plan
- Implementation
- Enforcement



Public Health Environment

- Number and Trajectory of Cases
- Testing Availability
- Hospital Bed Availability



Public Health Requirements School Sector



NVUSD
KAPA VALLEY UNIFIED SCHOOL DISTRICT

Organizing Principles for Preventing COVID-19 Transmission by Age Group

Organizing Principle:
Stable Cohorts

Organizing Principle:
Physical Distancing &
Face Coverings



Public Health Requirements

All Schools

- Distance teacher and staff desks at least six feet away from students to minimize adult-to-child disease transmission.
- Assign stable seating arrangements for students to ensure that close contacts within classrooms are minimized and easily identifiable.
- Increase ventilation by increasing outdoor air circulation (e.g., by opening windows or using high-efficiency air filters and increasing ventilation rates.
- All staff are required to wear face coverings.

Public Health Requirements

Elementary Schools

- Maintain stable classroom cohorts by keeping the same students and teacher or staff together during the day.
- Students should not mix with other stable classroom cohorts.
- Students in third grade and up must wear face coverings.

Middle and High Schools

- Reduce disease transmission risk by maximizing the space between student desks
- Require face coverings for all students while on campus.

Program Options

Option #1 In-Person Learning Option

Families able to come back in person when public health conditions allow



Option #2 Virtual Learning Academy Option

Families uncomfortable attending schools during pandemic conditions.



In Person Learning Option AM/PM Hybrid Model



NVUSD
NAPA VALLEY UNIFIED SCHOOL DISTRICT

In Person Elementary Sample Schedule

AM Cohort 8:00-10:30

PM Cohort 12:30-3:00

(Times will vary slightly based on transportation schedules)

Students will be assigned additional work to ensure continued learning during the hours they are not on campus.

Distance Learning Platform: Seesaw K-2 Google Classroom 3-5

In Person Secondary Sample Schedule

AM Cohort 8:00-10:45

PM Cohort 12:15-3:00

(Times will vary slightly based on transportation schedules)

Students will be assigned additional work to ensure continued learning during the hours they are not on campus.

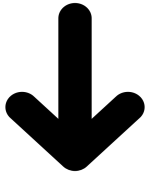
Distance Learning Platform: Google Classroom



In Person Secondary Sample Schedule

	Monday	Tuesday	Wednesday	Thursday	Friday
AM	AM Cohort Periods 1, 3 5	AM Cohort Periods 2,4,6	AM Cohort Periods 1, 3 5	AM Cohort Periods 2,4,6	AM Cohort Periods 1, 3 5
PM	PM Cohort Periods 1,3,5	PM Cohort Periods 2,4,6	PM Cohort Periods 1,3,5	PM Cohort Periods 2,4,6	PM Cohort Periods 1,3,5

Robust Distance Learning



Phase One	Phase Two	Phase Three	Phase Four
Robust Distance Learning	In person 2-3 days AM/PM	In Person 5 days AM/PM	In person 5 days Full days

Robust Distance Learning

Attendance will be taken daily

Schedule

Daily synchronized instruction for all students TK-12

Teacher access and support for families

Curriculum and Grading

Scope and sequence aligned with state standards

All students will receive grades and teacher feedback for work

Robust Distance Learning

New online platforms

- Dreambox Math (K-8)
- Imagine Learning (EL)
- iXL (SPED)
- Unique Learning (SPED)

Tech Tools to Increase Student Engagement:

Peardeck, Kami, Screencastify, Edpuzzle



Robust Distance Learning

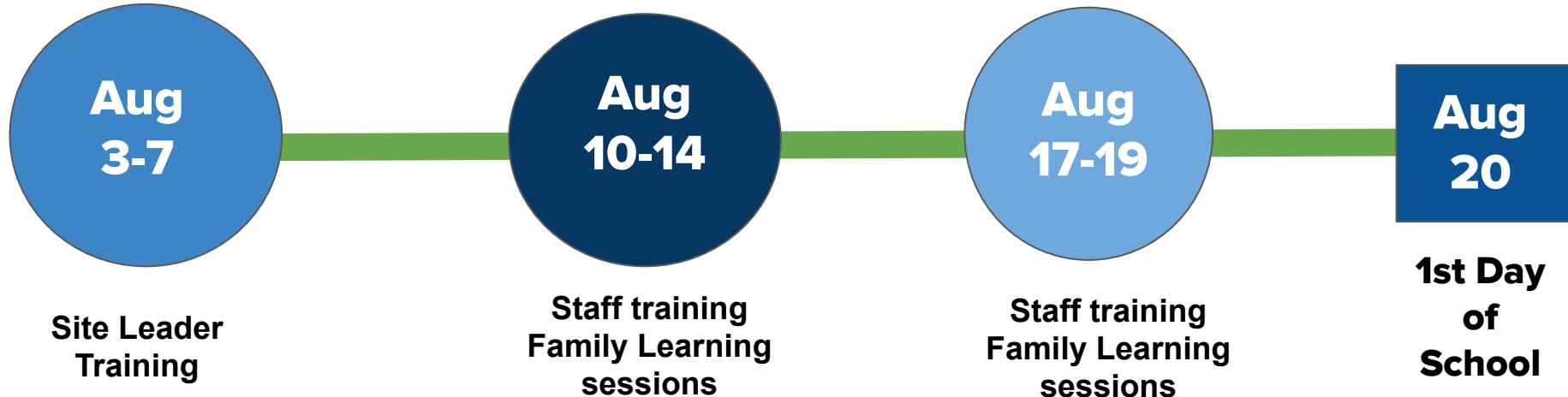
Expectations of Instructional Staff

- Teachers will report to their campuses and teach from the classroom.
- Teachers will teach synchronously five days a week to meet instructional minutes requirements.
- Instructional staff will be available by appointment to assist students.
- Increased accountability

Robust Distance Learning

Site Leader, Teacher and Family Training

- August learning series for site leaders, teachers and families
- Teacher networks planned to support throughout the year
- Content development support for grades TK-12



Option #2

Virtual Learning Academy



NVUSD
KAPA VALLEY UNIFIED SCHOOL DISTRICT

Virtual Learning Academy

- Families not interested in returning in person during the unpredictable pandemic conditions
- No in person classes offered
- Fully committed to remote learning for at minimum one semester
- Alternative to homeschooling
- Available year long to TK-12



Virtual Learning Academy

- Synchronous and asynchronous instruction
- Standards based curriculum materials
- Online learning platform
- Learning facilitated by NVUSD teachers



NVUSD
NAPA VALLEY UNIFIED SCHOOL DISTRICT

Next Steps: Instructional Services

- Ensure that every child has virtual access and a device
- Address unfinished learning from the Spring
- Address specific needs of students with IEP and English Learners in distance learning
- Provide a strong socio-emotional component to the start of the new year
- Collaborate with childcare partners
- Develop training schedules

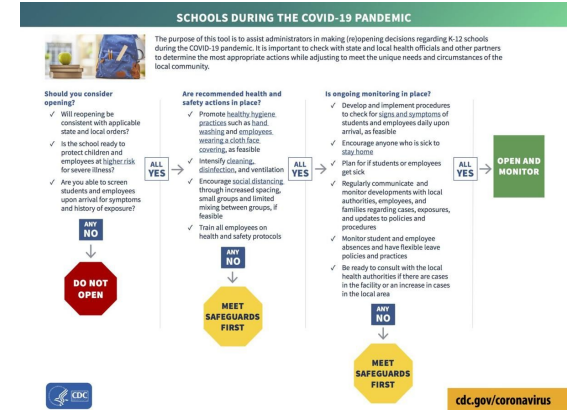
Questions or Comments

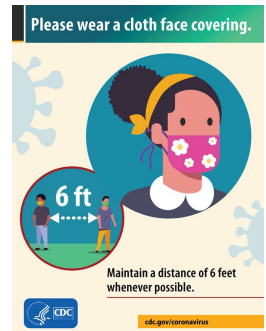
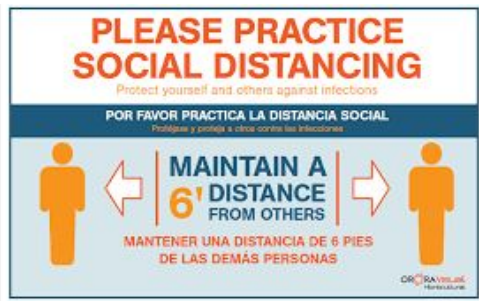


Operational Services

6 steps

1. Prepare the buildings/buses/grounds
2. Prepare the workforce - training
3. Control Access
4. Create a Social Distancing Plan
5. Reduce Touchpoints & Increase Cleaning
6. Communication, Communication, Communication





‘When we open for staff & students, school sites will look and feel much different.’



Public Health Requirements

Elementary Schools

- Maintain stable classroom cohorts by keeping the same students and teacher or staff together for the entire school day.
- Students should not mix with other stable classroom cohorts.
- Students in third grade and up must wear face coverings.

Middle and High Schools

- Reduce disease transmission risk by maximizing the space between student desks
- Require face coverings for all students

Custodial/Facilities

- Cleaning, sanitizing and disinfecting standards, schedules, PPE & inventory supplies
- Shared responsibility by staff - cleaning and sanitizing
 - High touch items and areas
- Disinfecting owned by Operations/Custodial staff
 - Classrooms, Offices & Bathrooms - nightly
 - EPA - chemicals
 - Electrostatic Sprayer
- Training staff - Integrated Pest Management (IPM)



Custodial/Facilities



6 Steps for Safe & Effective Disinfectant Use



Step 1: Check that your product is EPA-approved

Find the EPA registration number on the product. Then, check to see if it is on EPA's list of approved disinfectants at [epa.gov/pesticide-registration](https://www.epa.gov/pesticide-registration)



Step 2: Read the directions

Follow the product's directions. Check "use sites" and "surface types" to see where you can use the product. Read the "precautionary statements."



Step 3: Pre-clean the surface

Make sure to wash the surface with soap and water if the directions mention pre-cleaning or if the surface is visibly dirty.



Step 4: Follow the contact time

You can find the contact time in the directions. The surface should remain wet the whole time to ensure the product is effective.

Step 5: Wear gloves and wash your hands

For disposable gloves, discard them after each cleaning. For reusable gloves, dedicate a pair to disinfecting COVID-19. Wash your hands after removing the gloves.



Step 6: Lock it up

Keep lids tightly closed and store out of reach of children.



[coronavirus.gov](https://www.coronavirus.gov)



NVUSD
KAPA VALLEY UNIFIED SCHOOL DISTRICT

Maintenance/Facilities

- **Facility Modification**

- Plexiglass
- Signage
- Hand sanitizer - wall mounted and stations
- Water fountain conversion

- **HVAC**

- HVAC units with economizers set to 100% outside air.
- Run system fans continuously
- Filters and filter schedule



Maintenance HVAC & Hygiene



Arrived:

★ Filters

Ordered:

★ Wall mounted hand sanitizer

★ Workspace
Plexiglass shields



NVUSD
KAPA VALLEY UNIFIED SCHOOL DISTRICT

Personal Protective Equipment (PPE)



Arrived:

- ★ Adult mask (surgical and cloth)
- ★ Face shields
- ★ Children masks (surgical and cloth)
- ★ Hand Sanitizer
- ★ Thermometers
- ★ Specialized PPE - nurses



Food Services

- Schedules depending on phasing
 - Curbside
 - Classroom - Elementary
 - Grab & Go - Secondary (mobile carts)
 - Pre-packaged boxes or bags of food
- Eating inside vs. outside (classroom vs. cafeteria)
- Closely monitor USDA and NSLP guidelines



NAPA'S OPERATIVE for SCHOOL food HEALTH



NVUSD
KAPA VALLEY UNIFIED SCHOOL DISTRICT

Transportation

- Transportation schedules
- Increased cleaning standards and frequency
- Social distancing- as best as possible



Operational Services/Student Services

Next Steps for School Sites:

**COVID School Site Safety
Protection Plan (SSPP) Template**



Business Services

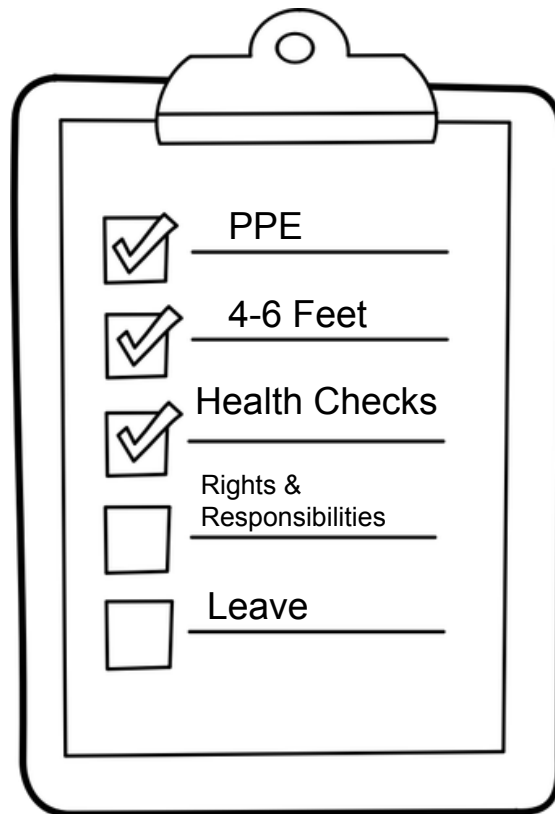
- Budget Considerations
 - Learning Continuity Plan
- Face-to-Face Instruction to the Greatest Extent Possible
- ADA Frozen as of February 29,2020
 - Required to take attendance with possible financial penalties
 - Minimum Daily Instruction met through physical attendance or work assigned (180 and 240 minutes)
 - 180 Day School Year
 - Must check in with students daily and follow-up with students who don't attend after 3 days

Human Resources Support

Healthy Workplace Plan

Site/Department Specific Plan

Return to Work Online Training



Additional Leave Available



Employee unable to work or telework due to:

- being subject to a quarantine or isolation order related to COVID-19
- being advised by a health care provider to self-quarantine due to COVID-19 concerns
- experiencing symptoms of COVID-19 and seeking a medical diagnosis

12

12 WEEKS of FMLA job protection*

2 WEEKS

Emergency Paid Sick Leave

- 2 weeks of pay (regular schedule)
- Full regular rate of pay, not to exceed \$511/day (\$5,110 aggregate)
- Applies to absences from 4/1/20 - 12/31/20
- Employee not required to use other leave accruals first
- Employee is eligible regardless of how long employed

Can integrate with unemployment benefits and/or any accrued vacation/annual leave

10 WEEKS

NOT ELIGIBLE FOR EMERGENCY FAMILY & MEDICAL LEAVE EXPANSION PAY

Can integrate with disability/unemployment benefits and/or any accrued vacation/sick/annual leave

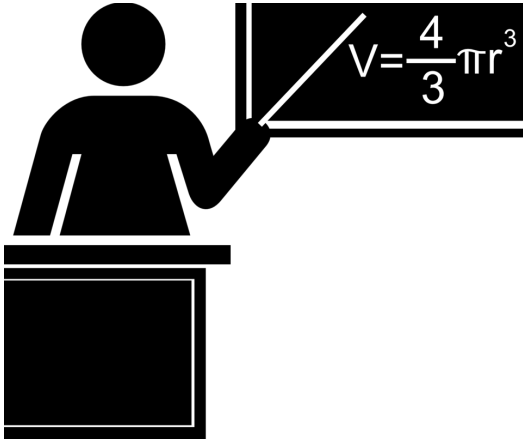
**If an employee has already exhausted their FMLA entitlement for the year, this does not grant them an additional FMLA period.*



NVUSD
NAPA VALLEY UNIFIED SCHOOL DISTRICT

Staffing Questions

- Who has the ability to return?
- Who will be able to stay at work?
- Will we have substitutes available?



Superintendent Comments to Board

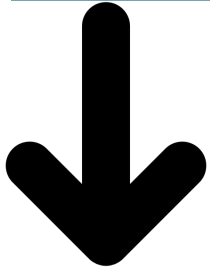
- Health and safety
- Educational access
- Evaluation of risk changes week to week

NVUSD must be nimble and flexible!



NVUSD
KAPA VALLEY UNIFIED SCHOOL DISTRICT

Phased Re-entry Approach Depending on Public Health Conditions



Phase One

- Robust Distance Learning for “In Person Students” with support services and student engagement opportunities on campus
- Virtual Learning Academy for families who choose remote learning for the semester during these uncertain times

Phase Two

- Phased approach to in person hybrid model; implementing components of the hybrid schedule before scaling systems and operations
- Virtual Learning Academy continues

Phase Three

- Hybrid In Person 5 days a week in morning and afternoon cohorts TK-12
- Virtual Learning Academy continues

Phase Four

- In person 5 day full day schedule option
- Virtual Learning Academy continue

Superintendent Comments to Board

Our goal:

5 day hybrid in person am/pm schedule when public health conditions allow; the start date of the implementation of the hybrid in person option remains contingent upon public health conditions and employee negotiations on safety issues; we remain hopeful about moving to an in person model in Napa County across our 28 schools but remain attentive to public health trends and safety guidelines



Superintendent Comments to Board

Staff Recommendation for Reopening:

Staff recommends that we start in Phase one and move into Phase two and three as soon as the public health conditions allow. Phase four is our ultimate goal when it is safe.



Next Steps for NVUSD Families

- Parent communication
- District webpage with detailed information for families including an FAQ
- Enrollment options form
- Parent Zoom meetings next week



Questions or Comments

