

Alvord Unified School District

NOTICE OF PUBLIC HEARING

The Alvord Unified School District Hereby Gives Notice that
a Public Hearing will be held as follows:

TOPIC OF HEARING:

ADOPTION OF APPROVING ADJUSTED TRUSTEE AREA BOUNDARIES

NOTICE IS HEREBY GIVEN, that approval is requested for the Board of Education to accept Adjusted Trustee Area Boundaries the Board of Education at its regularly scheduled Board meeting on February 10, 2022, which meeting shall convene at 6:00 p.m., for the purpose of taking public comment on, Approving Trustee Area Boundaries.

Adjusted trustee area boundaries map is available for public inspection prior to the Board of Education meeting.

Alvord District Board Room

HEARING DATE: Thursday, February 10, 2022

TIME: 6:00 PM

LOCATION: District Board Room
Alvord Unified School District
9 KPC Parkway
Corona, CA 92879

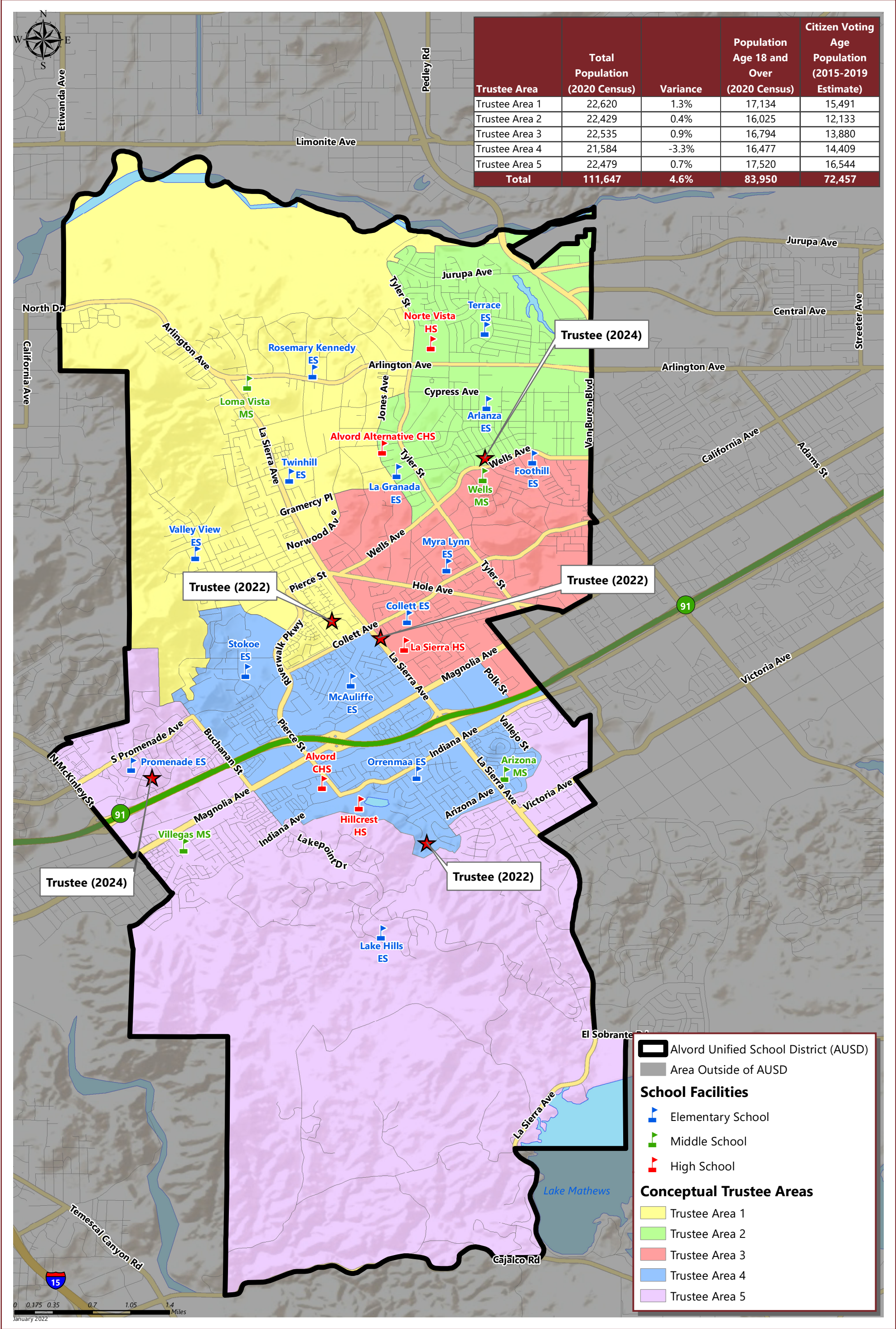
FOR ADDITIONAL INFORMATION CONTACT:

Administrative Services
9 KPC Parkway
Corona, CA 92879
(951) 509-6110

This public notice may be removed on February 11, 2022

ALVORD UNIFIED SCHOOL DISTRICT

CONCEPTUAL TRUSTEE AREAS - SCENARIO 3



ALVORD UNIFIED SCHOOL DISTRICT

CONCEPTUAL TRUSTEE AREAS - SCENARIO 3

Total Population:	111,647	Ideal Population:	22,329	Variance:	4.6%
-------------------	---------	-------------------	--------	-----------	------

Total Population (2020 Census)					
	Trustee Area 1	Trustee Area 2	Trustee Area 3	Trustee Area 4	Trustee Area 5
Population	22,620	22,429	22,535	21,584	22,479
Population Variance	291	100	206	-745	150
	1.3%	0.4%	0.9%	-3.3%	0.7%
Hispanic/Latino	62.2%	82.0%	71.0%	56.0%	42.6%
White	21.7%	9.6%	15.0%	23.5%	29.5%
Black/ African American	3.9%	3.2%	5.7%	5.7%	7.2%
American Indian/ Alaska Native	0.3%	0.4%	0.3%	0.2%	0.3%
Asian	8.1%	2.8%	5.2%	10.0%	15.8%
Native Hawaiian/ Other Pacific Islander	0.4%	0.2%	0.5%	0.6%	0.3%
Other	0.5%	0.3%	0.4%	0.7%	0.7%
Two or More Races	2.9%	1.4%	1.9%	3.3%	3.6%

Population 18 and Over (2020 Census)					
	Trustee Area 1	Trustee Area 2	Trustee Area 3	Trustee Area 4	Trustee Area 5
Population	17,134	16,025	16,794	16,477	17,520
Hispanic/Latino	58.5%	79.0%	67.6%	53.0%	39.2%
White	24.7%	11.6%	17.5%	26.3%	31.7%
Black/ African American	4.1%	3.6%	5.9%	5.9%	7.6%
American Indian/ Alaska Native	0.4%	0.5%	0.3%	0.2%	0.3%
Asian	9.1%	3.4%	6.0%	10.6%	16.8%
Native Hawaiian/ Other Pacific Islander	0.4%	0.2%	0.5%	0.5%	0.3%
Other	0.5%	0.3%	0.3%	0.6%	0.7%
Two or More Races	2.4%	1.4%	1.8%	3.0%	3.3%

Citizens by Voting Age Population Estimate (2015-2019)					
	Trustee Area 1	Trustee Area 2	Trustee Area 3	Trustee Area 4	Trustee Area 5
Population	15,491	12,133	13,880	14,409	16,544
Hispanic/Latino	50.5%	69.5%	63.3%	46.3%	38.4%
White	32.1%	20.3%	23.6%	32.4%	36.3%
Black/ African American	4.8%	5.3%	6.8%	7.4%	7.7%
American Indian/ Alaska Native	0.3%	0.5%	0.1%	0.6%	0.3%
Asian	9.2%	4.1%	4.9%	10.4%	16.0%
Native Hawaiian/ Other Pacific Islander	0.6%	0.0%	0.4%	0.7%	0.1%
Other	0.0%	0.0%	0.0%	0.0%	0.0%
Two or More Races	2.6%	0.4%	0.9%	2.3%	1.2%