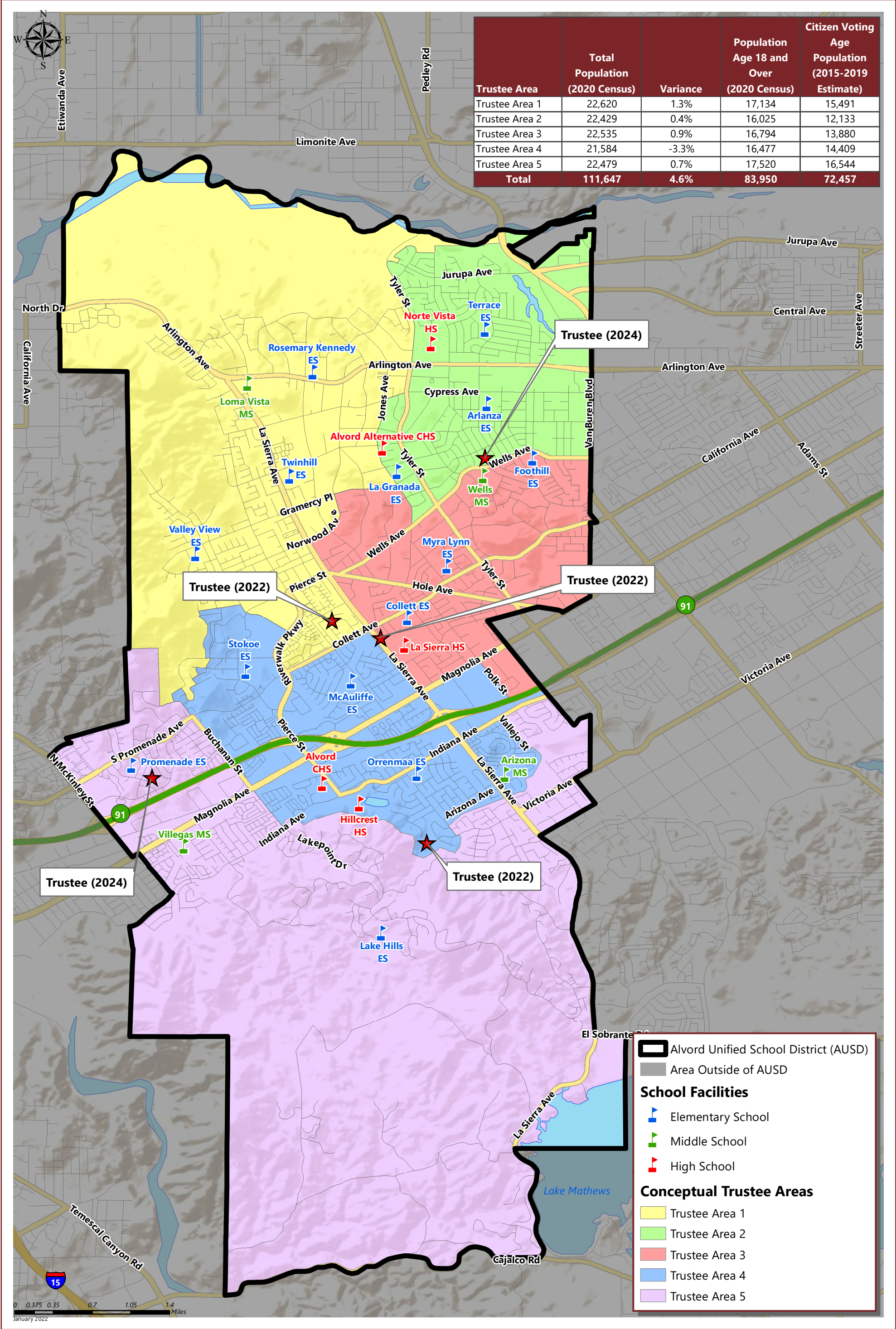


# ALVORD UNIFIED SCHOOL DISTRICT

## CONCEPTUAL TRUSTEE AREAS - SCENARIO 3



ALVORD UNIFIED SCHOOL DISTRICT

CONCEPTUAL TRUSTEE AREAS - SCENARIO 3

Total Population:	111,647	Ideal Population:	22,329	Variance:	4.6%
-------------------	---------	-------------------	--------	-----------	------

Total Population (2020 Census)					
	Trustee Area 1	Trustee Area 2	Trustee Area 3	Trustee Area 4	Trustee Area 5
Population	22,620	22,429	22,535	21,584	22,479
Population Variance	291	100	206	-745	150
	1.3%	0.4%	0.9%	-3.3%	0.7%
Hispanic/Latino	62.2%	82.0%	71.0%	56.0%	42.6%
White	21.7%	9.6%	15.0%	23.5%	29.5%
Black/ African American	3.9%	3.2%	5.7%	5.7%	7.2%
American Indian/ Alaska Native	0.3%	0.4%	0.3%	0.2%	0.3%
Asian	8.1%	2.8%	5.2%	10.0%	15.8%
Native Hawaiian/ Other Pacific Islander	0.4%	0.2%	0.5%	0.6%	0.3%
Other	0.5%	0.3%	0.4%	0.7%	0.7%
Two or More Races	2.9%	1.4%	1.9%	3.3%	3.6%

Population 18 and Over (2020 Census)					
	Trustee Area 1	Trustee Area 2	Trustee Area 3	Trustee Area 4	Trustee Area 5
Population	17,134	16,025	16,794	16,477	17,520
Hispanic/Latino	58.5%	79.0%	67.6%	53.0%	39.2%
White	24.7%	11.6%	17.5%	26.3%	31.7%
Black/ African American	4.1%	3.6%	5.9%	5.9%	7.6%
American Indian/ Alaska Native	0.4%	0.5%	0.3%	0.2%	0.3%
Asian	9.1%	3.4%	6.0%	10.6%	16.8%
Native Hawaiian/ Other Pacific Islander	0.4%	0.2%	0.5%	0.5%	0.3%
Other	0.5%	0.3%	0.3%	0.6%	0.7%
Two or More Races	2.4%	1.4%	1.8%	3.0%	3.3%

Citizens by Voting Age Population Estimate (2015-2019)					
	Trustee Area 1	Trustee Area 2	Trustee Area 3	Trustee Area 4	Trustee Area 5
Population	15,491	12,133	13,880	14,409	16,544
Hispanic/Latino	50.5%	69.5%	63.3%	46.3%	38.4%
White	32.1%	20.3%	23.6%	32.4%	36.3%
Black/ African American	4.8%	5.3%	6.8%	7.4%	7.7%
American Indian/ Alaska Native	0.3%	0.5%	0.1%	0.6%	0.3%
Asian	9.2%	4.1%	4.9%	10.4%	16.0%
Native Hawaiian/ Other Pacific Islander	0.6%	0.0%	0.4%	0.7%	0.1%
Other	0.0%	0.0%	0.0%	0.0%	0.0%
Two or More Races	2.6%	0.4%	0.9%	2.3%	1.2%