



SAN MATEO
COUNTY
OFFICE OF
EDUCATION

Anne E. Campbell • County Superintendent of Schools

9.a.

August 9, 2017

To: Anne E. Campbell, County Superintendent of Schools

From: Nancy Magee
Associate Superintendent, Student Services Division

Subject: **Inclusive Services, SMCOE Special Education**

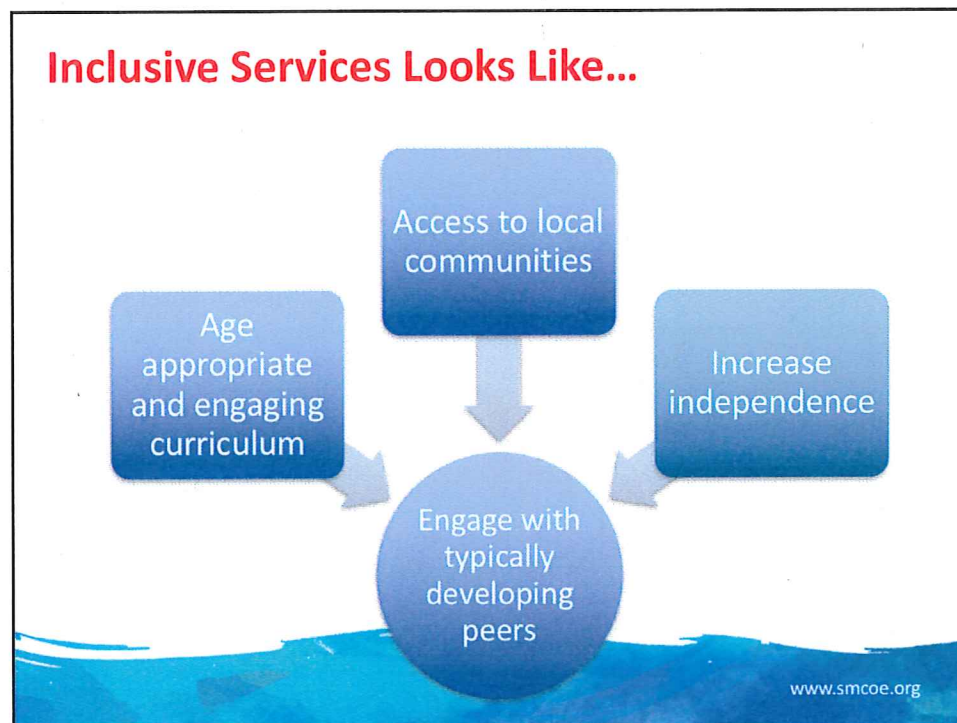
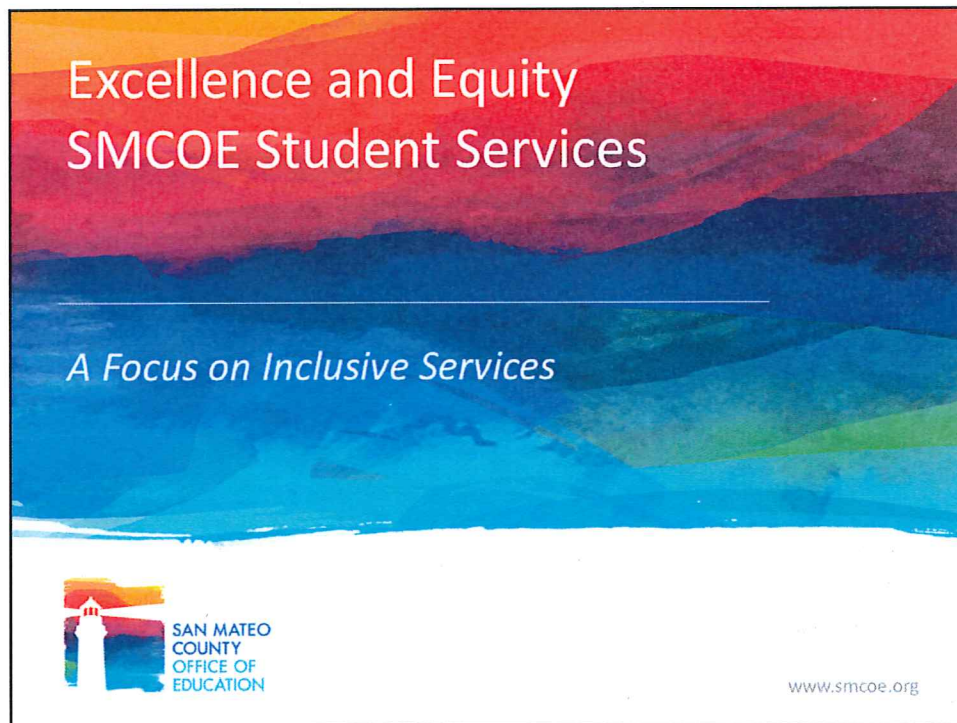
Over the past two years, SMCOE Student Services has intentionally worked to increase opportunities for our students to engage with typically developing peers across all our programs.

In the 2017-2018 school year we are excited to pilot several strategies to further strengthen our inclusive services, including the development of a vision for a fully inclusive early childhood education center at 65 Tower Road.

I will be present at the Board Meeting on August 16, 2017, to introduce a report by Dr. Mary Browning, Principal on Special Assignment, Inclusive Services. At the conclusion of the report, Dr. Browning and I will be happy to answer any questions the Board may have.

Approved and Recommended to the Board:


for Anne E. Campbell, County Superintendent of Schools



Early Childhood Education (ECE): A Historical View

EARLY START

- Early Intervention services provided to 40-50 children, ages birth to 3 years
- Children qualify for solely low incidence services (Deaf/Hard of Hearing; Vision Impairment; Orthopedic Impairment)
- Stable enrollment – most referrals generated through newborn hearing screening



www.smcoe.org

ECE: A Historical View

PRIOR TO 2015

Prior to 2015, services were delivered primarily at 65 Tower Road, in a segregated setting.

SINCE 2015

The program has made gradual shifts towards "natural environments."



www.smcoe.org

ECE: A Historical View . . .

SMCOE PRESCHOOL

- Provides special education services to 15-20 children annually
- Children are identified with Multiple Disabilities or as Deaf/Hard of Hearing
- Declining Enrollment – local districts are increasingly serving students in district-operated special education programs



www.smcoe.org

ECE: A Historical View continued . . .

"Sister Agency" Preschools

- Institute for Human and Social Development (IHSD) Head Start (18-20 children)
- Early Head Start (16 children)
- Stella Piccolo (fee for service preschool serving 20-30 preschool age children)



Efforts to integrate SMCOE students with typically developing peers have had limited success

(20 -30 minutes, 2 times weekly)



www.smcoe.org

ECE: The Vision

A shared vision and guiding principles adopted by all early childhood providers operating at ECE, with an emphasis on:

maximizing opportunities for students with diverse learning strengths & needs, socioeconomic backgrounds, ethnicities, and home languages to learn from each other and develop authentic friendships.



www.smcoe.org

The Vision for ECE:

Opportunities for all students to have access to **developmentally appropriate** instructional strategies, learning environments and materials, and a common curriculum, aligned with the Preschool Learning Foundations and the Quality Rating Improvement System.



www.smcoe.org

The Vision for ECE:

Opportunities for staff from all agencies to engage in common professional development and the time to collaborate with a single focus on student success.



www.smcoe.org

ECE: The Vision continued . . .

Provide family members from all agencies with opportunities to learn how to enhance their child's development.



www.smcoe.org

Next Steps:

- Partner with *Sister Agencies* to develop shared vision statement
- Partner with Licensing to identify and address barriers to implementation
- Deepen relationships with existing partners
- Explore opportunities with potential new partners



www.smcoe.org

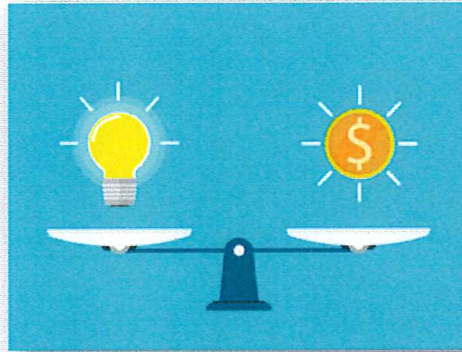
Next Steps:

- Explore adoption of common curriculum
- Schedule opportunities for staff collaboration and training across agencies
- Identify and commit to outcomes (student and program outcomes) for 2017-18
- Share vision, challenges, and successes with County Board of Education



www.smcoe.org

Our Goal...



www.smcoe.org



www.smcoe.org